

THE  
BEAUTY

2022

*of*

SIMPLI  
CITY

: inbani

GENERAL *MMXXII* CATALOGUE

CONTENTS

I.	PRELUDE	04
II.	COLLECTIONS	10
III.	PRODUCTS	192
IV.	APPENDIX	244

THE BEAUTY *of* SIMPLICITY

PRE

LU

---

DE



# I.

## CONCEPT

THERE IS BEAUTY IN SIMPLICITY  
AS WELL AS STRENGTH.

AN EMPTY SPACE CAN BE FILLED  
WITH SIMPLE LINES EXPRESSED THROUGH  
GEOMETRIC SHAPES AND TEXTURES.  
IT IS NOT ABOUT HOW MUCH  
BUT WHAT TO ADD.

THIS IS WHO WE ARE,  
THIS IS INBANI.

NEW BATHROOM CONCEPTS  
WITH THE AIM OF REDEFINING  
THE CONCEPT OF FUNCTIONALITY.







COOL

TI

ON

LEEC

---

S

# CO



GRATE  
Repetition and continuous contrast  
between lights and shadows.

# LL



STRATO  
An exclusive collection of  
minimalistic shapes.

# EC



HERITAGE  
Inspired by the premises of  
ancient Greek Architecture.



PARAL  
Timeless collection with cared  
proportions and iconic character.

# QR.

EN — If you want to keep up to date with our latest launches, this page is a QR table of contents. You can scan the codes to start surfing on our corporate website and find out all the latest news about our products and collections.

ES — Si quieres estar al tanto de nuestros últimos lanzamientos, esta página contiene un índice de códigos QR. Puedes escanearlos para empezar a navegar por nuestra web corporativa y conocer todas las novedades de nuestros productos y colecciones.

# S

# ON



## FACETT

Compact format and small cubic shapes perfect for small spaces.

# TI



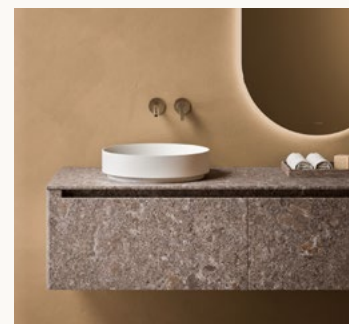
## ORIGIN

Implies the beginning of craftsmanship and industry.



## FORMA

A collection design by organic and geometric shapes.



## MDI

The perfect blend between design and ecology.



HER



ITA

GE

COLLECTIONS

I.

HERITAGE COLLECTION

A REINTERPRETATION OF THE PREMISES  
OF GREEK ARCHITECTURE BROUGHT  
TO THE PRESENT THROUGH THE SYNTHESIS  
OF ITS BASIC CHARACTERISTICS.



Designer  
Patrick Norguet

MMXXII Collection

INBANI





EN – This composition is made of a Heritage wall mounted unit with two bronzed tinted mirror drawers (HG250) in UHS Colour Coating Ivory 182. Heritage top mounted washbasin HG003 in UHS Colour Coating Country 238. Alo Oval mirror with LED lighting (ES376AO). Sierra-Olive-Beige rectangular Lined Court rug (AF023). Norm tables in Matt Lacquer Negro 221 and Shadow Wild Oak 509 (PR202).

ES – Composición formada por un módulo Heritage con dos cajones con frentes espejo bronce (HG250) en Lacado Color UHS Ivory 182. Lavabo sobreencimera HG003 en Lacado Color UHS Country 238. Espejo Alo Oval con iluminación LED (ES376AO). Alfombra Lined Court rectangular Sierra-Olivo-Beige (AF023). Mesa autoportante Norm en Laca Mata Negro 221 y Shadow Wild Oak 509 (PR202).





EN – This composition is made of two Heritage Freestanding washbasins HG001 in UHS Colour Coating Olive 190. Alo Round mirror with LED lighting (ES378AR). Freestanding bathtub (HG018) in UHS Colour Coating Olive 190. Two Beige-Black rectangular Tatami rugs (AF031). Two Strato wall mounted wardrobes structure in Shadow Wild Oak 509 (ST1301).

ES – Composición de dos lavabos Heritage Freestanding HG001 en Lacado Color UHS Olive 190. Espejos Alo Round con iluminación LED (ES378AR). Bañera exenta (HG018) en Lacado Color UHS Olive 190. Dos alfombra Tatami rectangular Beige-Negro (AF031). Dos módulos vestidor suspendidos Strato en Shadow Wild Oak 509 (ST1301).

“

# ELEGANT AND SENSUAL OBJECTS WITH AN ASSUMED PERSONALITY.

- PATRICK NORGUET -

---

EN — A reinterpretation of the premises of Greek architecture brought to the present by Patrick Norguet through an exercise of synthesis of its basic characteristics. The principle of vertical grooving that gave a sense of sobriety and slenderness to the Greek ancient buildings is applied on a smaller scale within this collection.

The collection is made of bold and monolithic objects where the forms seek to be based on the principles of harmony and proportion, but whose details contrast with the grooving that runs through their figures, giving them a dynamic and vibrant character.

ES — Una reinterpretación de las premisas de la arquitectura griega trasladada al presente mediante un ejercicio de síntesis de sus características básicas. El principio del ranurado vertical que otorgaba una sensación sobria y esbelta a las construcciones se logra implementar a una escala más pequeña dentro de la colección.

Se crean así objetos audaces y monolíticos cuyas formas buscan con ímpetu asentarse en los principios de la armonía y la proporción, pero cuyos detalles contrastan con este ranurado que recorre sus figuras aportándoles un carácter dinámico y vibrante.





GR



A

---

TE

COLLECTIONS













EN – This composition is made of two Grate wall mounted units with one drawer (GT113R+GT113L) in Tanned Wild Oak 551. Top with Paral double integrated washbasin (ST439RM PA60) in UHS Colour Coating Natural Tierra 267. GrateH80 mirror with LED lighting (GT407). Grate freestanding bench in Tanned Wild Oak 551.

ES – Composición de dos módulos suspendidos Grate (GT113R+GT113L) con un cajón en Tanned Wild Oak 551. Tapa Paral con doble lavabo integrado (ST439RM PA60) en Lacado Color UHS Tierra 267. Espejo GrateH80 con iluminación LED perimetral (GT407). Banco autoportante raranado Grate en Tanned Wild Oak 551.



EN – This composition is made of a unit with two drawers (GT123R), a unit with one door (GT131LZ), and top (GT205) in Natural Wild Oak 502. Four-legged (GT325) structure in Brushed Graphite aluminum. Top mounted Prime washbasin (PR002CS) in UHS Colour Coating Arena Grey 195. Strato round mirror with LED lighting (ES804L).

ES – Composición de un módulo con dos cajones (GT123R), un módulo de una puerta (GT131LZ) y tapa (GT205) en Natural Wild Oak 502. Estructura de cuatro patas (GT325) en aluminio Grafito Cepillado. Lavabo sobre encimera Prime (PR002CS) en Lacado Color UHS Arena Grey 195. Espejo redondo Strato con iluminación LED (ES804L).

## II.

GRATE COLLECTION

# REPETITION AND CONTINUOUS CONTRAST BETWEEN LIGHTS AND SHADOWS.

---



Designers  
Norm Architects

MMXXII Collection

INBANI



GRATE

30

INBANI



EN – This composition is made of two wall mounted units with drawers (GT113L+GT113R) in Bronzed Wild Oak 556 and tops with HO integrated washbasins in Marble Pietra Grey. Strato round mirror with LED lighting (ES802L). Grate floorstanding double cabinet (GT346) in Bronzed Wild Oak 556, with four-legged structure and handles in Brushed Graphite aluminum.

ES – Composición de dos módulos suspendidos con cajones (GT113L+GT113R) en Bronzed Wild Oak 556 y tapas con lavabo integrado HO en Mármol Pietra Grey. Espejo redondo Strato con iluminación LED (ES802L). Armario autoportante al suelo (GT346) en Bronzed Wild Oak 556, con estructura de cuatro patas y tiradores en aluminio Grafito Cepillado.







“

# SHADOWS ARE CAPABLE OF BALANCING OUR SENSATIONS.

- NORM ARCHITECTS -

---

EN — There is something soothing and elegant about repetition and the continuing contrast between light and shadow. The linear rhythm has always been a strong intervention in historical design and classical architecture, so by implementing this element in furniture design we manage to recreate a fraction of this feeling in a smaller scale.

Normally grates are experienced in a much more industrial and rougher environment, but by continuing the detail of the repetitive line, the cabinets become design objects themselves. This gives endless possibilities in expressions regarding the use of materials and textures.

ES — Hay algo relajante y elegante en la repetición y el continuo contraste entre luces y sombras. El ritmo lineal siempre ha sido una fuerte intervención en el diseño histórico y la arquitectura clásica, por lo que al implementar este elemento en el mobiliario logramos recrear una fracción de este sentimiento en una escala más pequeña.

Normalmente, las rejillas están presentes en un entorno mucho más industrial y brusco. Sin embargo, la aplicación del detalle de esta línea repetitiva sobre los módulos hace que se conviertan en objetos de diseño ofreciendo infinitas posibilidades en expresiones relacionadas con el uso de materiales y texturas.



EN – This composition is made of two Grate Freestanding washbasins GT002 in Tanned Wild Oak 551 and UHS Colour Coating Tierra 267. Strato oval mirrors with LED lighting (ST376 2V). Freestanding bathtub (AR150) in UHS Colour Coating Natural Tierra 267. Beige-Black rectangular Tatami rug (AF031). Freestanding towel rack with structure in Textured Lacquer Marengo 230 and tray in Tanned Wild Oak 551. (TR262).

ES – Composición de dos lavabos Grate Freestanding GT002 en Tanned Wild Oak 551 y Lacado Color UHS Tierra 267. Espejos ovalados Strato con iluminación LED (ST376 2V). Bañera exenta (AR150) en Lacado Color UHS Tierra 267. Alfombra Tatami rectangular Beige-Negro (AF031). Toallero autoportante con estructura en Laca Texturizada Marengo 230 y bandeja en Tanned Wild Oak 551 (TR262).





EN – This composition is made of one Grate Freestanding washbasin GT002 in Tanned Wild Oak 551 and Carrara marble. Strato oval mirror with LED lighting (ST376 2V).

ES – Composición de un lavabo Grate Freestanding GT002 en Tanned Wild Oak 551 y Mármol Carrara. Espejo ovalado Strato con iluminación LED (ST376 2V).



EN – This composition is made of one Grate Freestanding washbasin GT002 in Grey Wild Oak 551 and UHS Colour Coating Beige 181. Strato oval mirror with LED lighting (ST376 2V).

ES – Composición de un lavabo Grate Freestanding GT002 en Grey Wild Oak 551 y Lacado Color UHS Beige 181. Espejo ovalado Strato con iluminación LED (ST376 2V).



EN – This composition is made of a Grate Round unit with two drawers (GT177) in Mist Wild Oak 508. Simple top (GT227) with two AR140 top mounted washbasins in Carrara Marble. Strato Round mirror with LED lighting (ES804L). Beige-Black rectangular Tatami rug (AF031). Norm tables in Matt Lacquer Negro 221 and Mist Wild Oak 508 (PR202).

ES – Composición formada por un módulo Grate Round con dos cajones (GT177) en Mist Wild Oak 508. Tapa simple (GT227) con dos lavabos sobre encimera AR140 en Mármol Carrara. Espejo Strato Round con iluminación LED (ES804L). Alfombra Tatami rectangular Beige-Negro (AF031). Mesa autoportante Norm en Laca Mata Negro 221 y Mist Wild Oak 508 (PR202).







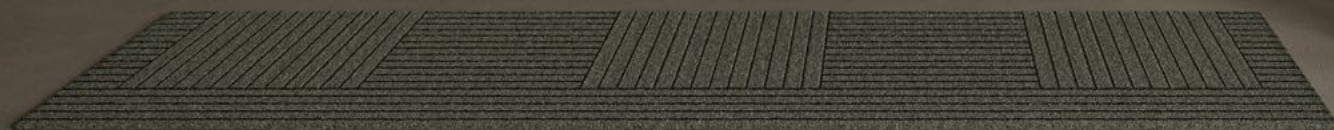




EN — This composition is made of two wall mounted units (GT103L + GT103R) and top in Pietra Grey Marble with GT50 integrated washbasins in Tierra 267. Framed mirror with aluminum shelf (GT417) in Brushed Graphite. Perimeter wall LED lighting. Freestanding bathtub (AR125) in Matt Solidsurface.

ES — Composición de dos módulos suspendidos (GT103L + GT103R) y tapa en Mármol Pietra Grey con dos lavabos integrados GT50 en Lacado Color UHS Tierra 267. Espejo con marco y estante en aluminio (GT417) acabado Grafito Cepillado e iluminación LED. Bañera exenta (AR125) en Solidsurface mate.





GRATE

45

INBANI





EN – This Grate composition is made of two single wall mounted units with two drawers (GT102) and round top mounted washbasins (PRO22) in Marble Pietra Grey. Strato16A mirrors with perimeter LED lighting (ST362 16A).



ES – Composición de dos módulos independientes (GT102) suspendidos con un cajón y dos lavabos sobre encimera (PRO22) en Mármol Pietra Grey. Espejos Strato16A con iluminación LED perimetral. (ST362 16A).





EN – This Grate composition is made of two units with drawer (GT102L+ GT102R) in Bronzed Wild Oak 556. Top (GT205) and top mounted (AR140) washbasin in Pietra Grey Marble. Four-legged (GT305) structure in Brushed Graphite aluminum. Origin beveled mirror with LED lighting (OG116L). Freestanding bathtub (AR150) in UHS Colour Coating Natural Grey 194.

ES – Composición Grate de dos módulos con cajón (GT102L+ GT102R) en Bronzed Wild Oak 556. Tapa (GT205) y lavabo sobre encimera (AR140) en Mármol Pietra Grey. Estructura de cuatro patas al suelo (GT305) en aluminio acabado Grafito Cepillado. Espejo Origin con bisel e iluminación LED (OG116L). Bañera exenta (AR150) en Lacado Color UHS Natural Grey 194.











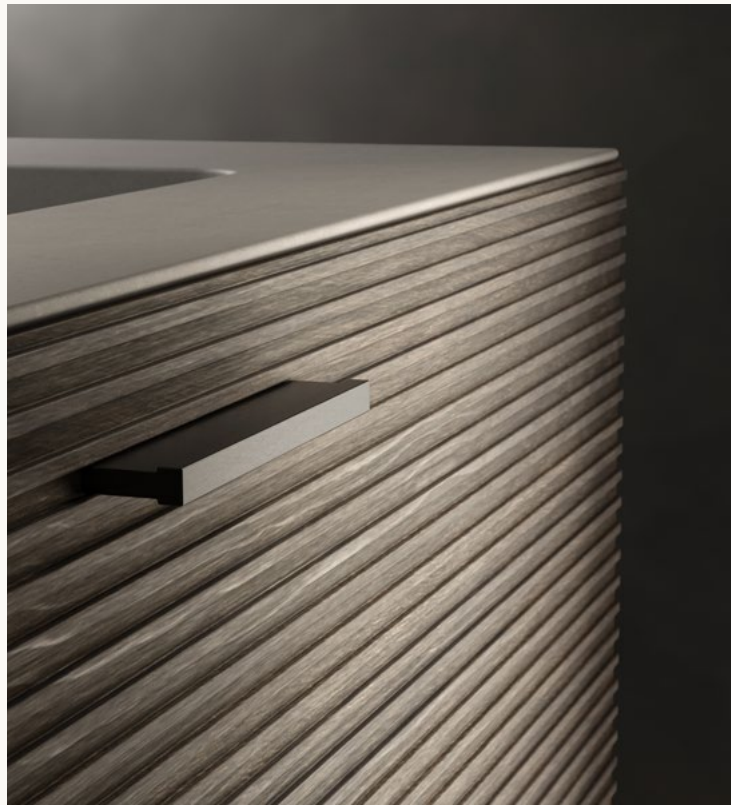
EN – This composition is made of two single units with one drawer (GT101) and top mounted Arc (AR032) washbasin in Pietra Grey Marble. Four-legged (GT301) structure in Brushed Graphite aluminum. Framed mirror (GT401) with aluminum shelf in Brushed Graphite and perimeter wall LED lighting.

ES – Composición Grate de dos módulos independientes (GT102), con un cajón y lavabo Arc (AR032) en mármol Pietra Grey. Estructura de cuatro patas al suelo (GT301) en aluminio acabado Grafito Cepillado. Espejo con marco y estante en aluminio (GT401) acabado Grafito Cepillado e iluminación LED.

EN – This composition is made of three Grate wall mounted furniture units with drawer (GT112L+GT112C+GT112R) in Grey Wild Oak 555. Top with H2 integrated washbasin in UHS Colour Coating Natural Grey 194. Grate mirror with LED lighting.

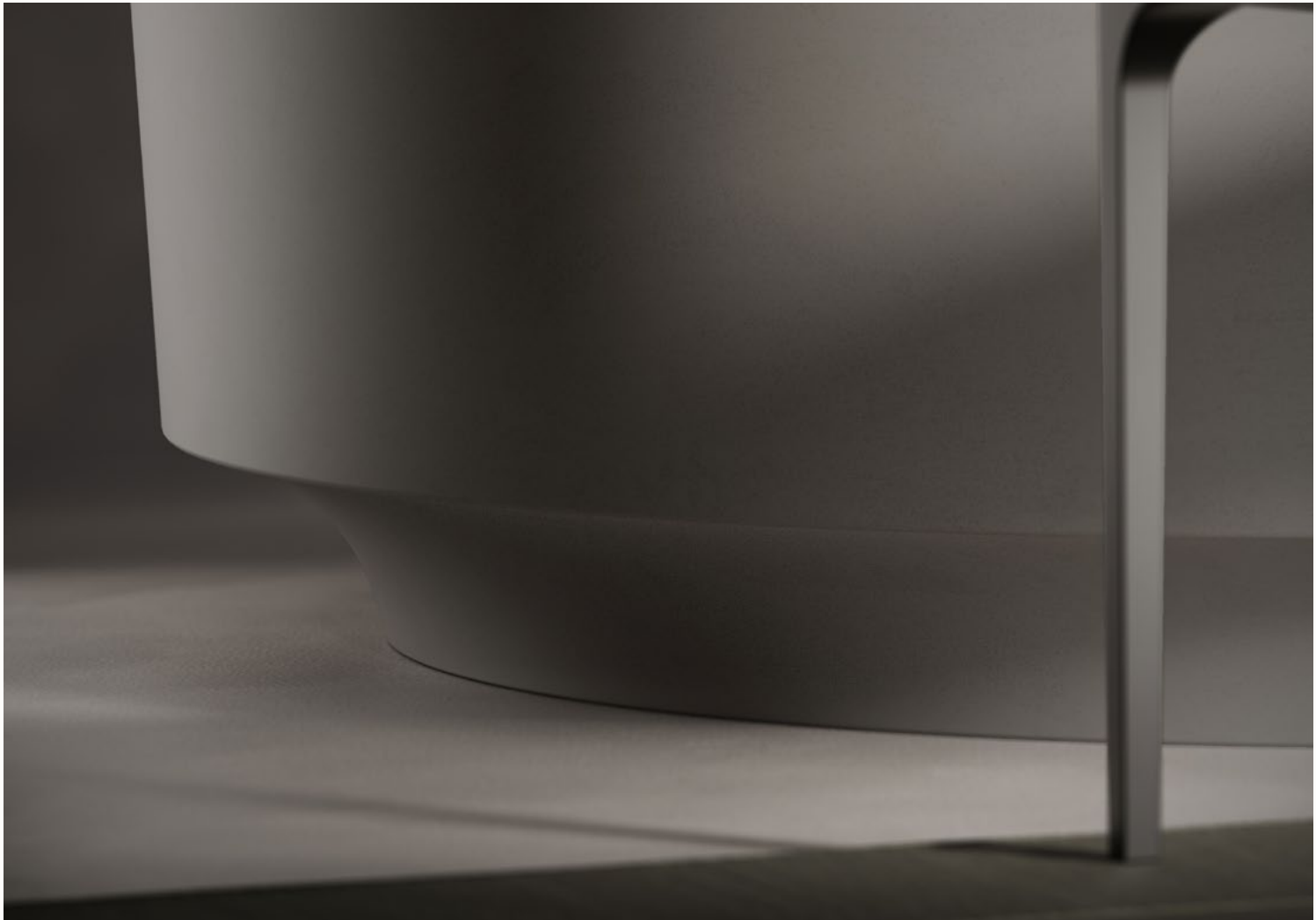
ES – Composición de tres módulos suspendidos Grate con cajón (GT112L+GT112C+GT112R) en Grey Wild Oak 555. Tapa con lavabo integrado H2 en Lacado Color UHS Natural Grey 194. Espejo Grate con iluminación LED.











EN – This composition is made of an Arc125 (AR125) freestanding bathtub in UHS Colour Coating Natural Grey 194. Freestanding bench (GT353) with fluted seat in Grey Wild Oak 555 with four-legged structure in Brushed Graphite.

ES – Composición de una bañera exenta Arc125 (AR125) en Lacado Color UHS Natural Grey 194. Banco autoportante (GT353) en Grey Wild Oak 555 ranurado con estructura de cuatro patas al suelo acabado Grafito Cepillado.





EN - This composition is made of a Grate single wall mounted unit with one drawers (GT103) and top (GT203) in Natural Wild Oak 502. Semi-inset Arc (AR041) washbasin in Pietra Grey marble. Wall mounted single cabinet with one door (GT340X) in Natural Wild Oak 502. Strato16A mirror with perimeter wall LED lighting (ST339 16A).



ES - Composición de un módulo independiente Grate (GT103) suspendido con un cajón y tapa (GT203) en Roble Salvaje Natural 502. Lavabo semi-encastado Arc (AR041) en Mármol Pietra Grey. Módulo auxiliar suspendido con una puerta (GT340X) en Roble Salvaje Natural 502. Espejo Strato16A con iluminación LED perimetral (ST339 16A).



STR



A

---

TO

COLLECTIONS

# III.

STRATO COLLECTION

AN EXCLUSIVE COLLECTION  
OF MINIMALISTIC SHAPES THAT  
ALLOWS THE FURNITURE  
TO ADAPT TO EVERY PROJECT.

---



Designer  
Inbani

MMXXII Collection

INBANI









EN – These compositions are made of a wall mounted Strato unit (ST701) with one drawer and an open unit with shelf (ST203) in Dried Wild Oak 553. Top with M54 integrated washbasin in MDi Ghost 703. Deco11 mirror with LED lighting. Freestanding bathtub (ARI50) in Matt Solidsurface. Strato wall mounted wardrobe units in Dried Wild Oak 553. Beige-Carmine-Indigo Lined Court rugs (AF021).

ES – Composición de dos módulos suspendidos Strato con un cajón (ST701) y un módulo abierto con estante (ST203) en Dried Wild Oak 553. Tapas con lavabo integrado M54 en MDi Ghost 703. Espejos Deco11 con iluminación LED. Bañera exenta (ARI50) en Solidsurface Mate. Módulos vestidor suspendidos Strato en Dried Wild Oak 553. Alfombras Lined Court Beige-Carmin-Indigo (AF021).

“

# STRATO IS OUR MOST VERSATILE AND PRACTICAL COLLECTION.

- INBANI -

---

EN — An exclusive collection of minimalistic shapes, the Strato collection allows the furniture to adapt to every project. This collection is the most versatile and practical in our catalogue.

Strato is a combination of wall mounted units and cabinets. The customization of this range offers different casing and exterior possibilities for the vanity units, based on the selection of the drawer opening system and the design choice for the sides of the unit. Drawer units are available in different finishes like: Matt lacquer, Textured lacquer, Glossy Lacquer; S1, S3 and S4 Woods; and MDi.

ES — Strato es un extenso programa modular de formas minimalistas que permite adaptar el proyecto de cada profesional al espacio deseado. En Strato existen diversidad de módulos estándares ofreciendo un gran abanico de posibilidades al cliente y convirtiendo a esta colección en una de las más versátiles y prácticas de nuestro catálogo.

El programa modular está disponible en diferentes sistemas constructivos, estos sistemas quedan definidos por la configuración de un tipo de costado y un sistema de apertura determinados. Amplio abanico de acabados para los módulos con cajón: Lacados en Mate, Texturizado o Brillo; Maderas S1, S3 y S4; y MDi.





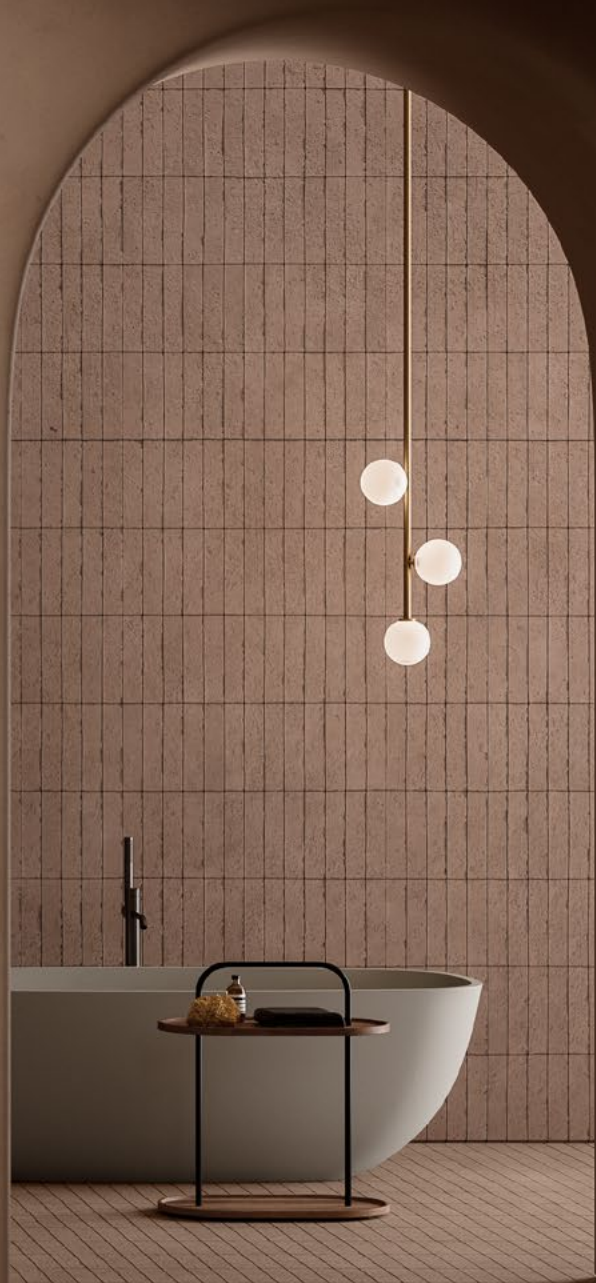
STRATO

67

INBANI

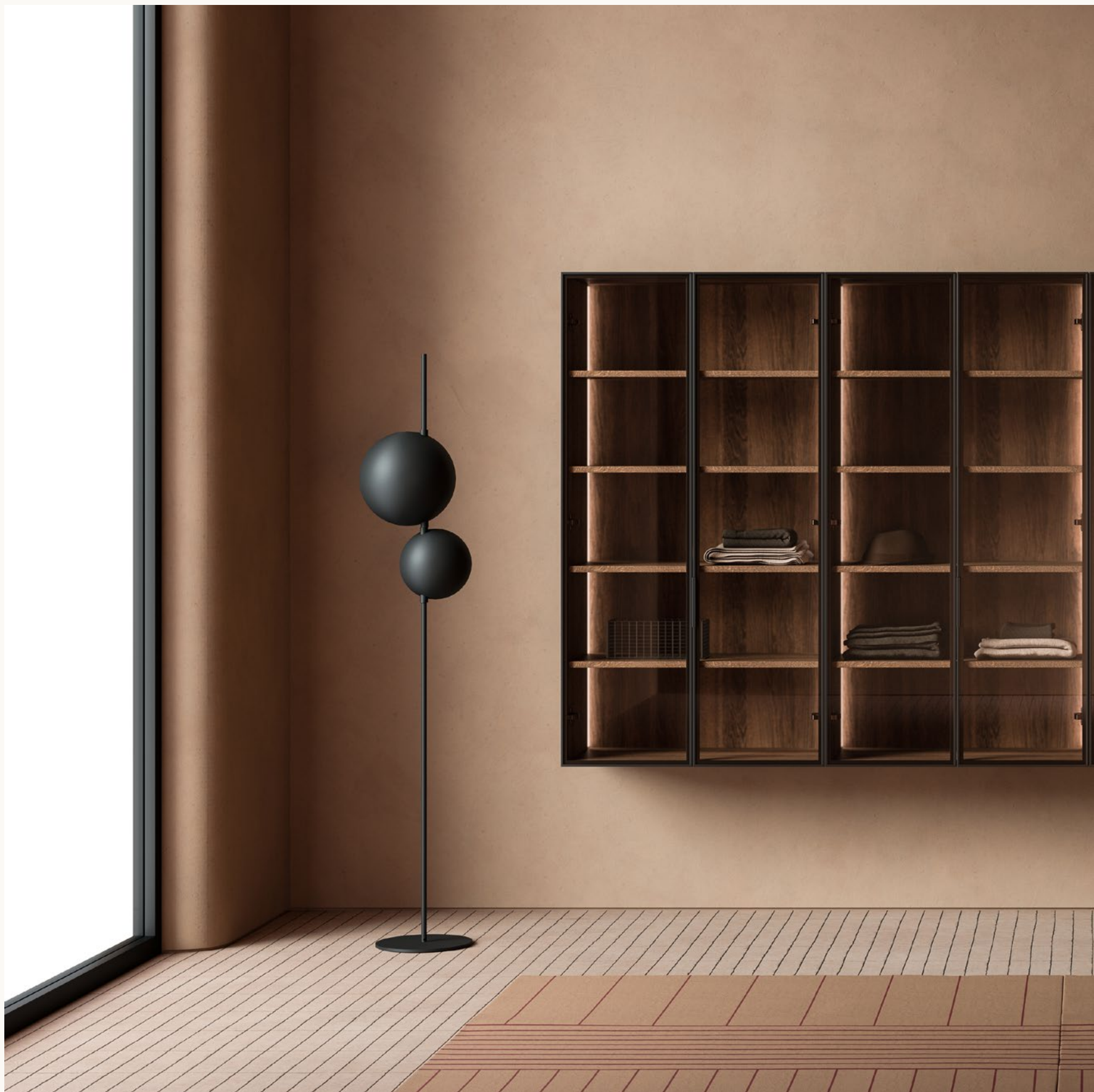
EN – This composition is made of a wall mounted Strato unit (ST756) with two drawers in Matt Lacquer Humo 281 and top with H2 integrated washbasin in UHS Colour Coating Humo 281. Strato16C mirror with LED lighting (ST318 16C). Freestanding bathtub (BA002) in UHS Colour Coating Humo 281. Strato wall mounted wardrobe units in Bronzed Wild Oak 556 (ST1143CR). Norm tables in Matt Lacquer Negro 221 and Bronzed Wild Oak 556 (PR202-PR203).

ES – Composición de un módulo suspendido Strato (ST756) con dos cajones en Laca Mate Humo 281 y tapa con lavabo integrado H2 en Lacado Color UHS Humo 281. Espejo Strato16C con iluminación LED (ST318 16C). Bañera exenta (BA002) en Lacado Color UHS Humo 281. Módulos vestidor suspendidos Strato (ST1143CR) en Bronzed Wild Oak 556. Mesas Autoportantes Norm en Laca Mate Negro 221 y Bronzed Wild Oak 556 (PR202-PR203).









EN – This composition is made of an Strato wall mounted wardrobe units in Bronzed Wild Oak 556 (STI143CR). Sierra-Carmin rectangular Tatami rugs (AF033).

ES – Composición de módulos vestidor suspendidos Strato (STI143CR) en Bronzed Wild Oak 556. Alfombras Tatami rectangular Sierra-Carmin (AF033).







“

# STRATO IS A COMBINATION OF WALL MOUNTED UNITS AND CABINETS

- INBANI -



EN – This composition is made of a single wall mounted Strato I unit (ST744) with two drawers in Matt Lacquer Basalto 193 and top with H5 integrated washbasin in UHS Colour Coating Basalto 193. Strato wall mounted cabinet unit with LED lighting (ST283ES). Sierra-Olive-Beige rectangular Lined Court rug (AF023).

ES – Composición de un módulo suspendido Strato I (ST744) con dos cajones en Laca Mate Basalto 193 y una tapa con lavabo integrado H5 en Lacado Color UHS Basalto 193. Módulo auxiliar camerino suspendido Strato con iluminación LED (ST283ES). Alfombra Lined Court rectangular Sierra-Olivo-Beige (AF023).

EN – This composition is made of two wall mounted Strato units (ST756-ST702) in Natural Raw Oak 602 and top with PA60 double integrated washbasin in UHS Colour Coating Noche 192. Strato16A mirror with LED lighting (ST453 16A). Freestanding bathtub (ARCI25) in UHS Colour Coating Noche 192. Olive-Black rectangular Tatami rugs (AF012).

ES – Composición de dos módulos suspendidos Strato (ST756-ST702) en Natural Raw Oak 602 con tapa con doble lavabo integrado PA60 en Lacado Color UHS Noche 192. Espejo Strato16A con iluminación LED (ST453 16A). Bañera exenta (AR125) en Lacado de Color UHS Noche 192. Alfombras Tatami rectangular Olivo-Negro (AF012).









EN – This composition is made of a single Strato H unit with two drawers (ST744) in Matt Lacquer Noche 192 and top with GR55 integrated washbasin in UHS Colour Coating Noche 192. Upper inner front in Pietra Grey Marble. Strato wall mounted cabinet unit (ST931ES) with three mirror doors. Olive-Black rectangular Tatami rug (AF012).

ES – Composición de un módulo Strato H con dos cajones (ST744) en Laca Mate Noche 192 y tapa con lavabo integrado GR55 en Lacado Color Noche 192. Barramento en Mármol Pietra Grey. Módulo auxiliar vitrina suspendido Strato (ST931ES) con puertas espejo. Alfombras Tatami rectangular Olivo-Negro (AF012).









EN – This composition is made of a single Strato V unit with three drawers (ST1057) in Matt Lacquer Steel 189. Simple top (ST373) and splashback in Black Marquina Marble Single with FM003 top mounted washbasin in UHS Colour Coating Steel 189. Strato16A mirrors with LED lighting (ST339 16A). Freestanding bathtub (FM010) in UHS Colour Coating Steel 189. Beige-Black rectangular Tatami rug (AF031). Norm tables in Matt Lacquer Negro 221 and Tanned Wild Oak 551 (PR202).

ES – Composición formada por un módulo compacto suspendido Strato V (ST1057) con tres cajones en Laca Mate Steel 189M. Tapa simple (ST373) y copete en Mármol Negro Marquina con lavabo sobre encimera FM003 en Lacado Color UHS Steel 189. Espejos Strato16A con iluminación LED (ST339 16A). Bañera exenta (FM010) en Lacado Color Steel 189. Alfombra Tatami rectangular Beige-Negro (AF031). Mesas Autoportantes Norm en Laca Mate Negro 221 y Tanned Wild Oak 551 (PR202).



STRATO

84

INBANI







EN – This composition is made of a single Strato V unit with two drawers (ST709) in Smoked Wild Oak 557 and top with M54 integrated washbasin in MDi Solar 701. Strato recessed metallic black profile cabinet (ST1123ES) with mirror doors and two internal shelves. Olive-Black rectangular Tatami rugs (AF012). Freestanding towel rack with structure in Textured Lacquer Marengo 230 and tray in Smoked Wild Oak 557.



ES – Composición de un módulo suspendido Strato V (ST709) con dos cajones en Smoked Wild Oak 557 con tapa con lavabo integrado M54 en MDi Solar 701. Módulo auxiliar vitrina empotrado Strato (ST1123ES) con dos puertas espejo y dos estantes interiores. Alfombras Tatami rectangular Olivo-Negro (AF012). Toallero auto-portante con estructura en Laca Texturizada Marengo 230 y bandeja en Smoked Wild Oak 557.



EN – This composition is made of a wall mounted Strato I unit (ST1057) with three drawers in Matt Lacquer Pizarra 278M. Single top in White Carrara Marble with AR041 semi-inset washbasins in Matt Solidsurface. Mirror with side frames in inox steel and wall LED lighting (ST379 15A). Freestanding bathtub (ARC125) in Matt Solidsurface.



ES – Composición formada por un módulo compacto suspendido Strato I (ST1057) con tres cajones en Laca Mate Pizarra 278M. Tapa simple en Mármol Blanco Carrara con lavabos semi-integrados AR041 en Solidsurface Mate. Espejo con laterales en acero e iluminación LED (ST379 15A). Bañera exenta (AR125) en Solidsurface Mate.







STRATO

90

INBANI











EN – Composition made of a Strato simple worktop in Bronzed Raw Oak 656. Two PRO02 top mounted washbasins in White Carrara Marble. Strato Frame12 mirror in Matt Lacquer Negro 221. Freestanding bathtub (PR011) in UHS Colour Coating Plomo 287. Strato floor standing wardrobes units in Bronzed Wild Oak 556.

ES – Composición de una encimera simple Strato en Bronzed Raw Oak 656. Dos lavabos sobre encimera PRO02 en Mármol Carrara Blanco. Espejo con marco Strato Frame12 en Laca Mate Negro 221. Bañera exenta (PR011) en Lacado Color Plomo 287. Módulos vestidor al suelo Strato en Bronzed Wild Oak 556.









EN – This composition is made of a Giro freestanding round washbasin (GR002) in UHS Colour Coating Plomo 287 with towel holder in Matt Lacquer Negro 221. Strato round mirror with perimeter wall LED lighting (ES808L). Freestanding bathtub (GR030) in UHS Colour Coating Sombra 291. Strato floor standing wardrobes units in Bronzed Wild Oak 556.

ES – Composición de un lavabo Giro freestanding (GR002) en Lacado Color UHS Plomo 287 con toallero en Lacado Negro Mate 221. Espejo redondo Strato con iluminación LED (ES808L). Bañera exenta (GR030) en Lacado Color UHS Sombra 291. Módulos vestidor al suelo Strato en Bronzed Wild Oak 556.







MD



COLLECTIONS









# M

# D

# I

IV.

EN — Minerals, Design and Innovation. These are the key premises on which this eco-sustainable porcelain technology is based. A whole revolution within the bathroom furniture design.

Taking nature as its source of inspiration, an innovative production process is applied. Recyclable products are obtained by selecting the finest minerals and speeding up the natural rock cycle. These are sustainable and environmentally friendly products. This process allows multiple possibilities when it comes to creating different surfaces as well as a complete control over the design.

WHOLE REVOLUTION — The blend of Strato collection with Inalco MDi technology brings a revolution based on the mix between design and state-of-the art materials.

The wide range of possibilities offered by Strato collection thanks to its modulation system is further expanded by adding this material, allowing to combine great technical performance with the latest design trends and textures within the world of architecture and interior design.

We chose Raw, Eros, Ghost and Solar as the models to configure our Strato collection. They fulfil a palette of neutral colours that goes from light to dark. This fact allows a high adaptability level in any kind of space. The characteristic weaving of these models, as well as their touch accentuate their unique personality, turning functional spaces as bathrooms are into havens of relaxation and liberation.

ES — Minerale, Diseño e Innovación. Son las premisas de esta tecnología de porcelánicos ecosostenibles. Toda una revolución dentro del mundo del diseño de mobiliario de baños.

Tomando como inspiración la línea natural del ciclo litológico de cualquier roca, se aplica un innovador proceso productivo en el que se seleccionan los mejores minerales haciendo de estas superficies productos reciclables, sostenibles y respetuosos con el medio ambiente. Este proceso permite crear un producto con múltiples posibilidades y un control total sobre el diseño.

UNA REVOLUCIÓN — Unir nuestra colección Strato a la tecnología MDi de Inalco, supone una revolución basada en la unión entre diseño y materiales de última generación.

El gran abanico de posibilidades se amplía aún más mediante la elección de un material que combina grandes prestaciones técnicas con diseños y texturas que están a la última dentro del mundo de la arquitectura, mobiliario y diseño de interiores.

Raw, Eros, Ghost y Solar son los modelos elegidos para configurar nuestra colección Strato. Abarcan una paleta de colores neutros que transcurre de claros a oscuros permitiendo una gran adaptabilidad en los espacios. El tramado que acompaña a estos modelos, así como su tacto; acentúan la personalidad de los entornos, convirtiendo la idea del baño como espacio funcional en refugios de relajación y liberación.





EN – This composition is made of two Strato H wall mounted units (ST744) in MDi Solar 701 and top with D1 integrated washbasins in UHS Colour Coating Noche 192. Deco21 mirror with LED lighting. Freestanding bathtub (BA003) in UHS Colour Coating Noche 192. Strato recessed wardrobes units. Olive-Carmine rectangular Tatami rug (AF032).

ES – Composición de dos módulos suspendidos Strato H (ST744) en MDi Solar 701 y tapa con lavabo integrado D1 en Lacado Color UHS Noche 192. Espejo Espejo Deco21 con iluminación LED. Bañera exenta (BA003) en Lacado Color UHS Noche 192. Módulos vestidor empotrados Strato. Alfombra Tatami rectangular Olivo-Carmin (AF032).











“  
A WHOLE REVOLUTION  
WITHIN THE BATHROOM  
FURNITURE DESIGN.

- INBANI -







EN – This composition is made of two Strato H wall mounted units (ST706) in MDi Raw 704 and top with M54 double integrated washbasins MDi Raw 704. Deco23 mirror with LED lighting. Wall-mounted bathtub (AR160) in UHS Colour Coating Arena Grey 195. Strato floor standing wardrobe units in Dried Wild Oak 553. Beige-Black rectangular Tatami rugs (AF031).

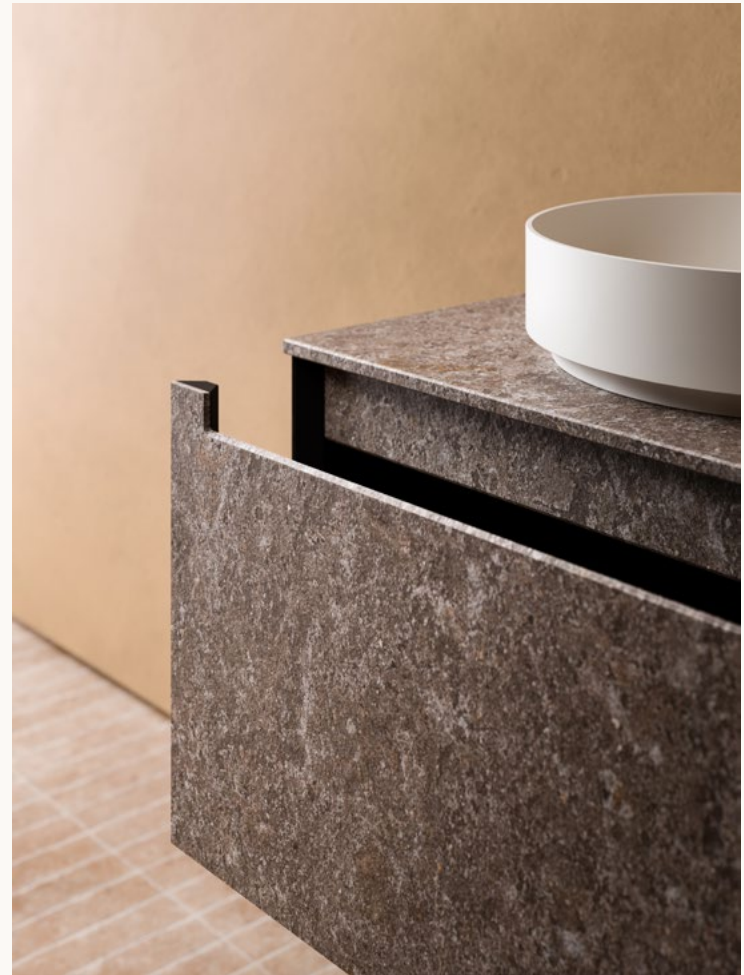
ES – Composición de dos módulos suspendidos con cajones (ST706) y tapa con doble lavabo integrado M54 en MDi Raw 704. Espejo Deco23 con iluminación LED. Bañera a pared (AR160) en Lacado Color UHS Arena Grey 195. Módulos vestidor al suelo Strato en Dried Wild Oak 553. Alfombras Tatami rectangular Beige-Negro (AF031).







EN – This composition is made of a simple wall mounted Strato H unit with two drawers (ST770) and simple top in MDi Solar 701. Top mounted washbasin (AR040) in Matt Solidsurface. Strato oval mirror with LED lighting. Beige-Black rectangular Tatami rug (AF011).



ES – Composición de un módulo suspendido Strato H con dos cajones (ST770) y tapa simple en MDi Solar 701. Lavabo sobre encimera (AR040) en Solidsurface Mate. Espejo ovalado Strato con iluminación LED. Alfombra Tatami rectangular Beige-Negro (AF011).







EN – This composition is made of a two wall mounted Strato H units (ST319) in MDi Eros 702 and an open unit with shelf (ST203) in Smoked Wild Oak 557. Top with M54 double integrated washbasin in MDi Eros 702. Deco22 mirror with LED lighting. Beige-Carmine-Indigo rectangular Lined Court rug (AF021). Norm circular table (PR202) in Textured Lacquer Negro 221.

ES – Composición de dos módulos suspendidos Strato H (ST319) en MDi Eros 702 y un módulo abierto con un estante (ST203) en Smoked Wild Oak 557. Tapa con doble lavabo integrado M54 en MDi Eros 702. Espejo Deco22 con iluminación LED. Alfombra Lined Court rectangular Beige-Carmin-Indigo (AF021). Mesa autoportante circular Norm (PR202) en Laca Texturizada Negro 221.





P A



R

---

A I L

COLLECTIONS

V.

PARAL COLLECTION

PARAL IS THE PURSUE  
OF A CONCLUSION  
IN BATHROOM AREA.



Designer  
Victor Carrasco

MMXXII Collection

INBANI



EN – This composition is made of a Paral single wall mounted unit (PA427) with two drawers and a wooden top (PA117) in Bronze Raw Oak 656. Handles and top mounted washbasin (PA002) in Black Marquina Marble. Strato mirror with aluminum structure. Perimeter wall LED lighting (ST379 16A).

ES – Composición de un módulo compacto Paral (PA427) con dos cajones y tapa (PA117) en Bronze Raw Oak 656. Tiradores y lavabo sobre encimera Paral100 (PA002) en Mármol Negro Marquina. Espejo Strato con estructura en aluminio. Iluminación LED perimetral mural (ST379 16A).



EN – This composition is made of two wall mounted Paral units (PA424) with two drawers in Grey Raw Oak 655 and top with PA60 integrated washbasins in UHS Colour Coating Natural Grey 194. Paral single mirror cabinets with LED lighting (PA610). Freestanding bathtub (PR011) in UHS Colour Coating Natural Grey 194. Paral floor standing wardrobe units in Grey Raw Oak 655.

ES – Composición de dos módulos compactos suspendidos Paral (PA424) con dos cajones en Grey Raw Oak 655 y tapa con lavabo integrado PA60 en Lacado Color UHS Natural Grey 194. Espejos independientes Paral con iluminación LED (PA610). Bañera exenta (PR011) en Lacado Color UHS Natural Grey 194. Módulos vestidor al suelo Paral en Grey Raw Oak 655.



PA

R

AL

IV.

EN — Rigorous but gentle. Paral is the pursue of a conclusion in bathroom area. Far away from passing fashion, its cared proportions are timeless solutions that define this collection as subtlety worked with an iconic character.

Parallel lines are generated by vertical handles built with innovative materials that convert the collection into an architectural must.

This collection is a combination of washbasins, wall mounted units and cabinets. The construction system for the units in this collection is entirely mitred; fronts with sides and top, as well as sides with top. The different washbasin types are available in Solidsurface, UHS Colour Coating or Marble. Drawer units are available in five different finishes: Matt lacquer, Textured lacquer, Glossy Lacquer, S3 and S4 woods.

ES — Amable y riguroso Paral es la búsqueda de una conclusión en el hábitat del baño. Alejado de modas pasajeras sus cuidadas proporciones y atemporales soluciones integran esta colección es un ejercicio de sutileza, pero con un marcado carácter icónico.

Sus elementos verticales, a modo de tiradores en innovadores materiales, crean líneas paralelas entre si haciendo de esta colección un must arquitectónico.

Colección formada por diferentes lavabos, muebles suspendidos y auxiliares. El sistema constructivo de los módulos de la colección es ingletado en su totalidad, tanto frontales con costados y tapa, así como costados con tapa.

Los diferentes modelos de lavabo están disponibles en Solidsurface, Lacado de Color UHS o Mármol. Cinco opciones de acabado para los módulos con cajón: Lacados en mate, texturizado o brillo y maderas S3 y S4.











EN – This composition is made of five Paral wall mounted units with one drawer and a wooden tops in Smoked Wild Oak 557. Wall mounted washbasins (PA002) in Carrara White Marble, Strato round mirror with LED lighting. Freestanding bathtub (FM011) in UHS Colour Coating Basalto 193. Paral floor standing wardrobe units in Smoked Wild Oak 557. Grate freestanding bench in Smoked Wild Oak 557.

ES – Composición de cinco módulos suspendidos Paral con cajón y tapas simples en Smoked Wild Oak 557. Lavabos suspendidos (PA002) en Mármol Blanco Carrara. Espejo redondo Strato con iluminación LED. Bañera exenta (FM011) en Lacado Color UHS Basalto 193. Módulos vestidor al suelo Paral en Smoked Wild Oak 557. Banco autoportante raranado Grate en Smoked Wild Oak 557.



PARAL

130

INBANI







EN – This composition is made of a wall mounted Paral unit (PA301) with one drawer in Matt Lacquer Quemado 199. Handle in Bronzed Wild Oak 556. Top mounted washbasin (PA001L) in UHS Colour Coating Quemado 199. Strato16A mirror with LED lighting (ST362 16A).

ES – Composición de un módulo suspendido Paral (PA301) con un cajón en Laca Mate Quemado 199. Tirador en Bronzed Wild Oak 556. Lavabo sobre encimera (PA001L) en Lacado Color UHS Quemado 199. Espejo Strato16A con iluminación LED (ST362 16A).





EN – This composition is made of a single wall mounted Paral unit (PA301) with one drawer in Matt Lacquer Sombra 291M. Top mounted washbasin (PA001L) in matt Solidsurface.

ES – Composición de un módulo Paral (PA301) con un cajón en Laca Mate Sombra 291M. Lavabo sobre encimera (PA001L) en Solidsurface mate.



Washbasin · Lavabo - UHS Desert 237  
Drawer unit · Módulo - LM Desert 237M  
Handle · Tirador - Glossy Chrome · Cromo brillo



Washbasin · Lavabo - UHS Vapor 282  
Drawer unit · Módulo - LM Vapor 282M  
Handle · Tirador - Brushed Gold · Oro Cepillado



Washbasin · Lavabo - UHS Crema 240  
Drawer unit · Módulo - LM Albero 225M  
Handle · Tirador - S3 Grey Wild Oak 555



Washbasin · Lavabo - UHS Acero 295  
Drawer unit · Módulo - LM Acero 295M  
Handle · Tirador - Brushed Graphite · Grafito Cepillado





Washbasin · Lavabo - UHS Natural Grey 194  
Drawer unit · Módulo - LM Terracota 228M  
Handle · Tirador - LM Terracota 228M



Washbasin · Lavabo - Solidsurface  
Drawer unit · Módulo - S3 Natural Wild Oak 502  
Handle · Tirador - S3 Natural Wild Oak 502



Washbasin · Lavabo - Carrara Marble · Mármol Carrara  
Drawer unit · Módulo - S3 Burned Wild Oak 554  
Handle · Tirador - S3 Burned Wild Oak 554



Washbasin · Lavabo - UHS Plomo 287  
Drawer unit · Módulo - S3 Smoked Wild Oak 557  
Handle · Tirador - S3 Smoked Wild Oak 557



EN – This composition is made of a wall mounted Paral unit (PA300) with one drawer in Matt Lacquer Vapor 282. Handle in Glossy Lacquer Noche 192. Top mounted washbasin (PA000R) in UHS Colour Coating Vapor 282. Paral single mirror cabinet with perimeter LED lighting (PA510).

ES – Composición de un módulo suspendido Paral (PA300) con un cajón en Laca Mate Vapor 282. Tirador en Laca Brillo Noche 192. Lavabo sobre encimera Paral60 (PA000R) en Lacado Color UHS Vapor 282. Espejo independiente Paral con iluminación LED perimetral (PA510).









Washbasin · Lavabo - Solidsurface  
Drawer unit · Módulo - S4 Natural Raw Oak 602  
Handle · Tirador - S4 Natural Raw Oak 602



Washbasin · Lavabo - UHS Plomo 287  
Drawer unit · Módulo - S4 Golden Raw Oak 603  
Handle · Tirador - S4 Golden Raw Oak 603



Washbasin · Lavabo - UHS Arcilla 191  
Drawer unit · Módulo - S4 Grey Raw Oak 655  
Handle · Tirador - S4 Grey Raw Oak 655



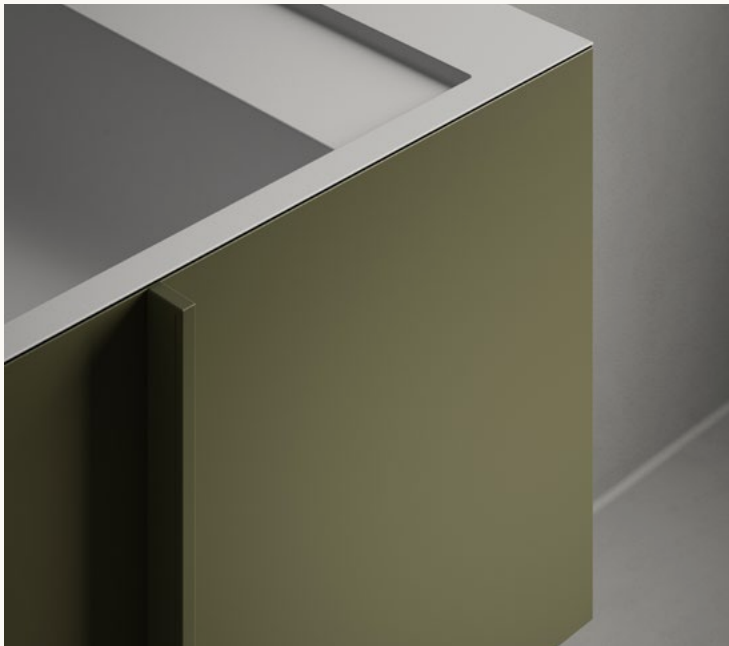
Washbasin · Lavabo - UHS Arena Grey 195  
Drawer unit · Módulo - S4 Bronzed Raw Oak 656  
Handle · Tirador - S4 Bronzed Raw Oak 656



Washbasin · Lavabo - UHS Natural Grey 194  
Drawer unit · Módulo - LM Country 238M  
Handle · Tirador - LM Country 238M



Washbasin · Lavabo - Solidsurface  
Drawer unit · Módulo - LM Musgo 290M  
Handle · Tirador - LM Musgo 290M



Washbasin · Lavabo - Solidsurface  
Drawer unit · Módulo - LT Caña 294T  
Handle · Tirador - LT Caña 294T

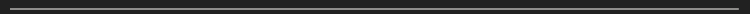


Washbasin · Lavabo - UHS  
Drawer unit · Módulo - LM Tabaco 244M  
Handle · Tirador - LM Tabaco 244M

FOR



M



A

COLLECTIONS





# VI.

FORMA COLLECTION

ORGANIC SHAPES  
PROVIDE CONTRAST TO  
THE GEOMETRIC SHAPES.

---



Designers  
Ludovica + Roberto Palomba

MMXXII Collection

INBANI



“  
THE COMBINATION SHAPES  
WITH NATURAL MATERIALS  
BRINGS AN ELEGANT  
ENVIRONMENT.

- LUDOVICA & ROBERTO PALUMBA -





EN – This composition is made of a wall mounted Forma unit (FM135) with two doors and two drawers in Textured Lacquer Lodo 198 and top with GR35 integrated washbasin in Matt Solidsurface. Freestanding bathtub (FM011) in Matt Topsolid. Strato recessed mirror cabinets (ST272E) with two doors and two interior shelves.

ES – Composición de un módulo compacto suspendido Forma (FM135) con dos puertas y dos cajones en Laca Texturizada Lodo 198 y tapa con lavabo integrado GR35 en Solidsurface Mate. Bañera exenta (FM011) en Topsolid Mate. Espejo camerino empotrado Strato de dos puertas y dos estantes interiores (ST272E).















EN — This composition is made of a wall mounted FORMA unit with two doors (FM106) in Bronzed Wild Oak S3 556. Top mounted wasbasin (FM001) in Matt Topsolid. Strato13A mirror with LED lighting.

ES — Composición de un módulo suspendido Forma (FM106) con dos puertas en Bronzed Wild Oak S3 556. Lavabo Forma sobre encimera (FM001) en Topsolid mate. Espejo Strato13A con iluminación LED.





EN - Wall mounted Forma unit with two drawers and two doors (FM14I) in S1 Sawn Oak 453. Matt Topsolid top mounted Forma washbasin (FM003). Belleved mirror with LED Lighting (FM705BL).

Módulo suspendido con dos cajones y dos puertas (FM14I) en madera S1 Roble Aserrado 453. Lavabo Forma sobre encimera (FM003) en Topsolid mate. Espejo ovalado con bisel e iluminación perimetral (FM705BL).







EN - Wall mounted Forma unit (FM128) with one drawer and two doors lacquered in Musgo 290M. Matt Glass top (FM528). Top mounted FORMA washbasin in Matt Topsolid.

ES - Módulo FORMA compacto suspendido (FM128) con un cajón y dos puertas en Laca Mate Musgo 290M. Tapa simple (FM528) en Cristal Mate. Lavabo FORMA sobre encimera (FM004) en Topsolid mate.









EN – This composition is made of a wall mounted Forma unit with one a door (FM103) lacquered in Matt Ocre 286. Matt Topsolid oval top mounted FORMA washbasin (FM001). Forma mirror with LED lighting (FM700BL).

ES – Composición de un módulo suspendido Forma de una puerta (FM103) lacado en Ocre 286 Mate. Lavabo Forma ovalado (FM001) sobre encimera en Topsolid mate. Espejo Forma con luz LED exterior (FM700BL).





EN - This composition is made of a wall mounted FORMA unit with one drawer and two doors (FM145) lacquered in Oceano 227M. Glass Matt top (FM545). Matt Topsolid oval top mounted FORMA washbasin (FM002). Forma beveled mirror with LED lighting.

ES - Composición de un módulo suspendido Forma de un cajón y dos puertas (FM145) lacado en Oceano 227M. Tapa en cristal mate (FM545). Lavabo FORMA ovalado (FM002) sobre encimera en Topsolid mate. Espejo Forma con bisel y luz LED exterior.



ORI



G

---

INN

COLLECTIONS





# VII.

ORIGIN COLLECTION

BACKGROUND. ROOTS.  
ORIGIN IMPLIES THE BEGINNING  
OF CRAFTSMANSHIP AND INDUSTRY.

---



Designer  
Seung-Yong Song

MMXXII Collection

INBANI



EN – This composition is made of an Origin wall mounted unit (OG040) with one drawer in Matt Lacquer Humo 28L. Simple top (OG060) and top mounted washbasin (OG008) in Black Marquina Marble. Origin round beveled mirror with LED lighting (OG116L).

ES – Composición de un módulo suspendido Origin (OG040) con un cajón en Laca Mate Humo 28L. Tapa simple (OG060) y lavabo sobre encimera (OG003) en Mármol Marquina Negro. Espejo redondo Origin con bisel e iluminación LED (OG116L).







EN – Freestanding Origin washbasin (OG004) with column in Black Marquina Marble. Freestanding Origin washbasin (OG004) with column in White Carrara Marble. Origin round mirror with LED lighting (OG116L).

ES – Lavabo freestanding Origin (OG004) con tótem al suelo en Mármol Negro Marquina. Lavabo freestanding Origin (OG004) con tótem al suelo en Mármol Blanco Carrara. Espejo circular Origin con iluminación LED (OG116L).



EN – This composition is made of an Origin floor standing unit with two drawers (OG250) in Dried Wild Oak 553. Top mounted Origin washbasin (OG006) in Carrara Marble. Simple Top (OG061) in Carrara Marble. Origin beveled mirror with LED lighting.



ES – Composición de un módulo Origin al suelo de dos cajones (OG250) en Dried Wild Oak 553. Lavabo Origin sobre encimera (OG007) en Mármol Blanco Carrara. Tapa simple (OG061) en Mármol Blanco Carrara.









EN – This composition is made of an Origin floor standing unit with two drawers (OG250) in Dried Wild Oak 553. Top mounted Origin washbasin (OG006) in Black Marquina Marble. Simple Top (OG061) in Black Marquina Marble. Origin beveled mirror with LED lighting.



ES – Composición de un Origin al suelo de dos cajones (OG250) en Dried Wild Oak 553. Lavabo Origin sobre encimera (OG007) en Mármol Negro Marquina. Tapa simple (OG061) en Mármol Negro Marquina. Espejo Origin con bisel e iluminación LED.



EN – This composition is made of an Origin floor standing unit with two drawers and two doors (OG360) in Grey Wild Oak 555 and simple top (OG063) in Matt Lacquered White 200. Top mounted washbasins (OG006) in Matt Solidsurface. Origin beveled mirrors with LED Lighting (OG103). Baskets (OG202-OG203) in Grey Wild Oak 555.

ES – Composición de un módulo al suelo Origin de dos cajones y dos puertas (OG360) en Grey Wild Oak 555 y tapa simple (OG063) en Laca Mate Blanco 200. Lavabos sobre encimera (OG006) en Solidsurface Mate. Espejos Origin con bisel e iluminación LED (OG103). Taburete-Canasto (OG202-OG203) en Grey Wild Oak 555.





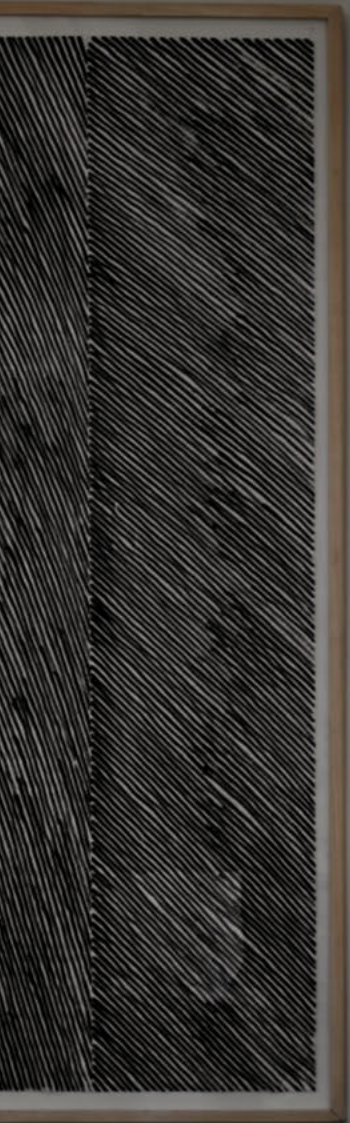




EN – This composition is made of and Origin wall mounted unit with three drawers (OG044) and simple top (OG062) in Matt Lacquer Agua 258. Round top mounted Prime45 washbasins (PR002) in Matt Solidsurface. Beveled mirror with LED Lighting (OG156L).

ES – Composición de un módulo suspendido Origin de tres cajones (OG044) y tapa simple (OG062) en Laca Mate Agua 258. Lavabo sobre encimera Prime45 (PR002) en Solidsurface Mate. Espejo con bisel e iluminación led (OG156L).









EN – This composition is made of a freestanding Origin bathtub (OG011) in Matt Topsolid. Base tray for bathtub (OG013) in Natural Wild Oak 502. Baskets (OG202 y OG203) in Natural Wild Oak 502.

ES – Composición de una bañera exenta (OG011) en Topsolid mate. Bandeja (OG013) de apoyo sobre bañera en Natural Wild Oak 502. Baskets (OG202 y OG203) en Natural Wild Oak 502.



FA

— C E —

TT

COLLECTIONS



# VIII.

FACETT COLLECTION

PERFECT FOR  
GUEST BATHROOMS, BEDROOMS  
AND VERY SMALL SPACES.



Designer  
Soda Designers

MMXXII Collection

INBANI



EN - This composition is made of a matt Solidsurface Facett washbasin (LA601). Oval NORM mirror-shelf (PRO81L) with LED lighting in S1 Natural Oak Sawn 442.

ES - Composición de un módulo lavabo Facett (LA601) en Solidsurface mate. Espejo-estante Norm ovalado (PRO81L) con iluminación LED en S1 Natural Oak Sawn 442.



EN - This composition is made of a Facett wall mounted unit with one door in S1 Bronzed Natural Oak 416. Brushed Gold handle. Matt Solidsurface Facett washbasin (LA600). Norm circular mirror-shelf (PR080L) with LED lighting in S1 Bronzed Natural Oak 416.

ES - Composición de un módulo Facett suspendido de una puerta en S1 Bronzed Natural Oak 416. Tirador en Oro Cepillado. Espejo-estante Norm circular (PR080L) con iluminación LED en S1 Bronzed Natural Oak 416.



PRO

DU



C

---

TS

III.

# PR



UNITS - MÓDULOS  
Heritage, Strato, Grate, Paral,  
Origin, MDi, Facett, Forma.

## QR.

EN — If you want to keep up to date with our latest launches, this page is a QR table of contents. You can scan the codes to start surfing on our corporate website and find out all the latest news about our products and collections.

ES — Si quieres estar al tanto de nuestros últimos lanzamientos, esta página contiene un índice de códigos QR. Puedes escanearlos para empezar a navegar por nuestra web corporativa y conocer todas las novedades de nuestro productos y colecciones.

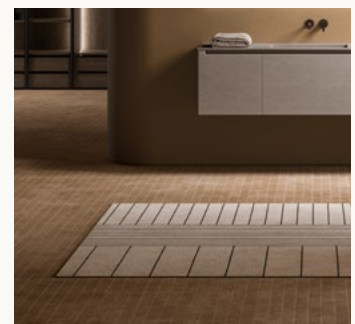


WASHBASINS - LAVABOS  
Heritage, Grate, Paral, Tambo,  
Origin, Facett, Prime, Arc, Giro,  
Forma, Ovalo, Cerclo, Quadro.



BATHTUBS - BAÑERAS  
Heritage, Arc, Origin, Forma, Vesta,  
Prime, Gout, Temple.

# O



RUGS - ALFOMBRAS  
Tatami and Lined Court.



#### TOPS - TAPAS

Paral, Giro, GT50, Prime, Float,  
D1-D2-D4, H2-H5-H6-H8, Ovalo,  
Cerclo, Quadro, Senio, H0, G1, M54.

# TS



#### WARDROBES - VESTIDORES

Strato, Grate-

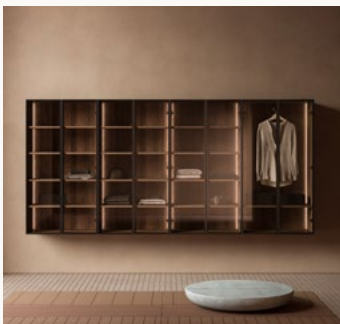
# C



#### MIRRORS - ESPEJOS

Grate, Origin, Forma, Strato, Deco,  
Norm, Alo.

# DU



#### FURNISHING - AUXILIARES

Strato, Grate.



#### ACCESSORIES - ACCESORIOS

Grate, Strato, Norm Tables, Tray,  
Bivio.

PRODUCTS

WASH  
BASINS



# HERITAGE85



DESIGNERS  
Patrick Norguet

SOLIDSURFACE  
Matt White

UHS COLOUR COATING  
60 colours

MARBLE  
White Carrara, Black Marquina, Pietra Grey

DIMENSIONS  
ø40 H85

HERITAGE85 — EN: Freestanding washbasin available in Solidsurface, Marble or UHS Colour Coating. ES: Lavabo freestanding disponible en Solidsurface, Mármol o Lacado Color UHS.



WASHBASINS

# HERITAGE50



DESIGNERS  
Patrick Norguet

SOLIDSURFACE  
Matt White

UHS COLOUR COATING  
60 colours

DIMENSIONS  
L55 W40 H50

HERITAGE50 — EN: Top mounted washbasin available in Solidsurface or UHS Colour Coating. ES: Lavabo sobre encimera disponible en Solidsurface o Lacado Color UHS.

198

# HERITAGE55



DESIGNERS  
Patrick Norguet

SOLIDSURFACE  
Matt White

UHS COLOUR COATING  
60 colours

MARBLE  
White Carrara, Black Marquina, Pietra Grey

DIMENSIONS  
L55 W35 H15

HERITAGE55 — EN: Top mounted washbasin. Available in Solidsurface, Marble and UHS Colour Coating. ES: Lavabo sobre encimera. Disponible en Solidsurface, Mármol o Lacado Color UHS.



INBANI

# HERITAGE38

HERITAGE38 — EN: Top mounted washbasin. Available in Solidsurface, Marble and UHS Colour Coating. ES: Lavabo sobre encimera. Disponible en Solidsurface, Mármol o Lacado Color UHS.

DESIGNERS  
Patrick Norquet

SOLIDSURFACE  
Matt White

UHS COLOUR COATING  
60 colours

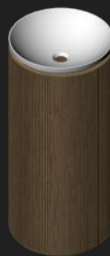
MARBLE  
White Carrara, Black Marquina, Pietra Grey

DIMENSIONS  
Ø38 H15



WASHBASINS

# GRATE88



DESIGNER  
Norm Architects

FINISHES  
Solidsurface  
UHS Colour Coating  
Marble

DIMENSIONS  
Ø40 H88

GRATE88 — EN: Freestanding washbasin made of a Straight Column and Arc41 washbasin. Column available in Wild Oak S3. Washbasin available in Marble, Matt Solidsurface or UHS colour coating. ES: Lavabo freestanding compuesto por columna recta y lavabo Arc41. Columna disponible en Roble Salvaje S3. Lavabo disponible en Mármol, Solidsurface Mate o Lacado Color UHS.



# GRATE88



GRATE88 — EN: Freestanding washbasin available in Marble. ES: Lavabo freestanding disponible en Mármol.

DESIGNER  
Norm Architects

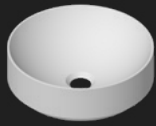
MARBLE  
White Carrara, Black Marquina, Pietra Grey

DIMENSIONS  
Ø40 H88



INBANI

# ARC32



DESIGNERS  
Norm Architects

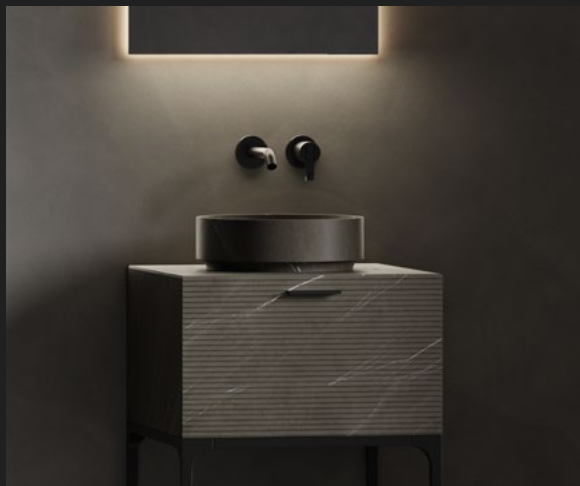
SOLIDSURFACE  
Matt White

UHS COLOUR COATING  
60 colours

MARBLE  
White Carrara, Black Marquina, Pietra Grey

DIMENSIONS  
ø32 H10

ARC32 — EN: Top mounted washbasin available in Solidsurface, Marble or UHS Colour Coating. ES: Lavabo sobre encimera disponible en Solidsurface, Mármol o Lacado Color UHS.



WASHBASINS

# ARC40



ARC40 — EN: Top mounted washbasin available in Solidsurface, Marble or UHS Colour Coating. ES: Lavabo sobre encimera disponible en Solidsurface, Mármol o Lacado Color UHS.

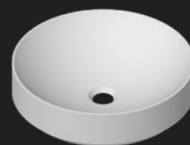
DESIGNERS  
Norm Architects

SOLIDSURFACE  
Matt White

UHS COLOUR COATING  
60 colours

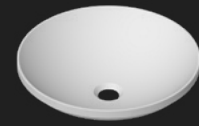
MARBLE  
White Carrara, Black Marquina, Pietra Grey

DIMENSIONS  
ø40 H10



200

# ARC41



DESIGNERS  
Norm Architects

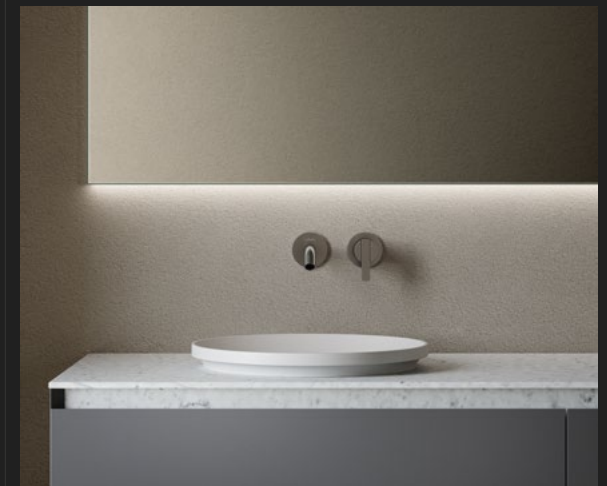
SOLIDSURFACE  
Matt White

UHS COLOUR COATING  
60 colours

MARBLE  
White Carrara, Black Marquina, Pietra Grey

DIMENSIONS  
ø40 H10 (4)

ARC41 — EN: Semi-inset washbasin available in Solidsurface, Marble or UHS Colour Coating. ES: Lavabo semi-encastrado disponible en Solidsurface, Mármol o Lacado Color UHS.



INBANI



# ARC88

ARC88 — EN: Lavabo freestanding a suelo en Solidsurface mate. ES: Matt solidsurface round freestanding washbasin

SOLIDSURFACE  
Matt White

UHS COLOUR COATING  
60 colours

MARBLE  
White Carrara, Black Marquina, Pietra Grey



WASHBASINS

# PRIME88



DESIGNERS  
Norm Architects

FINISHES  
Solidsurface  
UHS Colour Coating

DIMENSIONS  
ø45 H88

PRIME88 — EN: Freestanding washbasin made of a Conic Column and Prime45 washbasin. Available in Matt Solidsurface or UHS colour coating. ES: Lavabo freestanding compuesto por Columna Cónica y lavabo Prime45. Disponible en Solidsurface Mate o Lacado Color UHS.



201

# PRIME88



PRIME88 — EN: Freestanding washbasin made of a Straight Column and Prime45 washbasin. Column available in Marble or Wild Oak S3. Washbasin available in Marble, Matt Solidsurface or UHS colour coating. ES: Lavabo freestanding compuesto por columna recta y lavabo Prime45. Columna disponible en Mármol o Roble Salvaje S3. Lavabo disponible en Mármol, Solidsurface Mate o Lacado Color UHS.

DESIGNERS  
Norm Architects

FINISHES  
Solidsurface  
UHS Colour Coating  
Marble

DIMENSIONS  
ø45 H88



INBANI

# PRIME60



PRIME60 — EN: Top mounted washbasin. Available in Solidsurface, Marble or UHS Colour Coating. ES: Lavabo sobre encimera disponible en Solidsurface, Mármol o Lacado Color UHS.

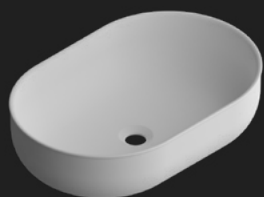
DESIGNERS  
Norm Architects

SOLIDSURFACE  
Matt White

UHS COLOUR COATING  
60 colours

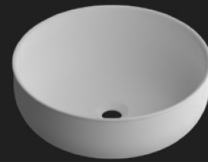
MARBLE  
White Carrara, Black Marquina, Pietra Grey

DIMENSIONS  
L60 W40 H15



WASHBASINS

# PRIME45



DESIGNERS  
Norm Architects

SOLIDSURFACE  
Matt White

UHS COLOUR COATING  
60 colours

MARBLE  
White Carrara, Black Marquina, Pietra Grey

DIMENSIONS  
ø45 H15

PRIME45 — EN: Round top mounted washbasin. Available in Solidsurface, Marble or UHS Colour Coating. ES: Lavabo sobre encimera disponible en Solidsurface, Mármol o Lacado Color UHS.



202

# PRIME35



PRIME35 — EN: Round top mounted washbasin. Available in Solidsurface, Marble or UHS Colour Coating. ES: Lavabo sobre encimera disponible en Solidsurface, Mármol o Lacado Color UHS.

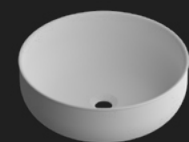
DESIGNERS  
Norm Architects

SOLIDSURFACE  
Matt White

UHS COLOUR COATING  
60 colours

MARBLE  
White Carrara, Black Marquina, Pietra Grey

DIMENSIONS  
Solidsurface - ø35 H13  
Marble - ø35 H15



INBANI

# ORIGIN85



DESIGNERS  
Seung-Yong Song

SOLIDSURFACE  
Matt White

UHS COLOUR COATING  
60 colours

MARBLE  
White Carrara, Black Marquina, Pietra Grey

DIMENSIONS  
ø42,5 H85

ORIGIN85 — EN: Round freestanding washbasin with column. Available in Solidsurface, Marble or UHS Colour Coating. ES: Lavabo freestanding con tótem al suelo disponible en Solidsurface, Mármol o Lacado Color UHS.



WASHBASINS

# ORIGIN45



ORIGIN45 — EN: Top mounted washbasin. Available in Solidsurface, Marble or UHS Colour Coating. ES: Lavabo sobre encimera disponible en Solidsurface, Mármol o Lacado Color UHS.

DESIGNERS  
Seung-Yong Song

SOLIDSURFACE  
Matt White

UHS COLOUR COATING  
60 colours

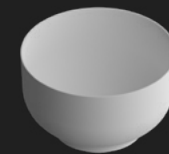
MARBLE  
White Carrara, Black Marquina, Pietra Grey

DIMENSIONS  
ø42,5 H45



203

# ORIGIN25



DESIGNERS  
Seung-Yong Song

SOLIDSURFACE  
Matt White

UHS COLOUR COATING  
60 colours

MARBLE  
White Carrara, Black Marquina, Pietra Grey

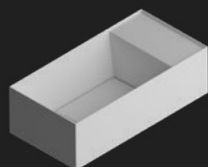
DIMENSIONS  
ø42,5 H25

ORIGIN25 — EN: Top mounted washbasin. Available in Solidsurface, Marble or UHS Colour Coating. ES: Lavabo sobre encimera disponible en Solidsurface, Mármol o Lacado Color UHS.



INBANI

## FACETT40



DESIGNERS  
Soda Designers

SOLIDSURFACE  
Matt White

UHS COLOUR COATING  
60 Colours

DIMENSIONS  
L40 W20 H12

FACETT40 — EN: Wall mounted washbasin. Available in Solidsurface or UHS Colour Coating. A Solidsurface drain cover can be added. ES: Lavabo sobre encimera o suspendido. Disponible en Solidsurface o Lacado Color UHS. Posibilidad de tapa oculta desagüe en Solidsurface.



WASHBASINS

## FACETT50



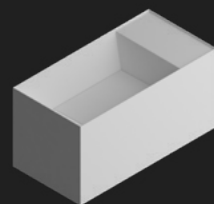
FACETT50 — EN: Wall mounted washbasin. Available in Solidsurface or UHS Colour Coating. A Solidsurface drain cover can be added. ES: Lavabo sobre encimera o suspendido. Disponible en Solidsurface o Lacado Color UHS. Posibilidad de tapa oculta desagüe en Solidsurface.

DESIGNERS  
Soda Designers

SOLIDSURFACE  
Matt White

UHS COLOUR COATING  
60 Colours

DIMENSIONS  
L50 W25 H25



204

## GIRO85



DESIGNERS  
Ludovica+Roberto Palomba

SOLIDSURFACE  
Matt White

UHS COLOUR COATING  
60 colours

MARBLE  
White Carrara, Black Marquina, Pietra Grey

DIMENSIONS  
ø35 H85

GIRO85 — EN: Round freestanding washbasin. Available in Solidsurface, Marble or UHS Colour Coating. Optional brass towel holder. ES: Lavabo freestanding disponible en Solidsurface, Mármol o Lacado Color UHS. Complemento opcional de toallero.



INBANI

# GIRO45



GIRO45 — EN: Solidsurface wall mounted oval washbasin. Available in Solidsurface or UHS Colour Coating. With optional brass towel holder. ES: Lavabo suspendido a pared disponible en Solidsurface o Lacado Color UHS. Con complemento opcional de toallero.

DESIGNERS  
Ludovica+Roberto Palomba

SOLIDSURFACE  
Matt White

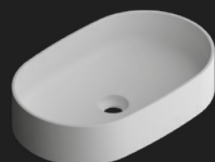
UHS COLOUR COATING  
60 colours

DIMENSIONS  
L39 W37 H45



WASHBASINS

# GIRO55



DESIGNERS  
Ludovica+Roberto Palomba

SOLIDSURFACE  
Matt White

UHS COLOUR COATING  
60 colours

MARBLE  
White Carrara, Black Marquina, Pietra Grey

DIMENSIONS  
L55 W35 H12

GIRO55 — EN: Top mounted or under mounted washbasin. Available in Solidsurface, Marble or UHS Colour Coating. ES: Lavabo sobre o bajo encimera disponible en Solidsurface, Mármol o Lacado Color UHS.



205

# GIRO37



GIRO37/39 — EN: Top mounted or under mounted washbasin. Available in Solidsurface, Marble or UHS Colour Coating. ES: Lavabo sobre o bajo encimera disponible en Solidsurface, Mármol o Lacado Color UHS.

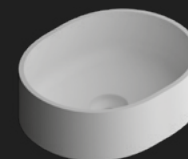
DESIGNERS  
Ludovica+Roberto Palomba

SOLIDSURFACE  
Matt White

UHS COLOUR COATING  
60 colours

MARBLE  
White Carrara, Black Marquina, Pietra Grey

DIMENSIONS  
Solidsurface - L37 W30 H12  
Marble - L39 W35 H12



INBANI

# PARAL60



PARAL60 — EN: Top or wall mounted washbasin.  
Available in Solidsurface, Marble and UHS Colour Coating.  
ES: Lavabo sobre encimera o suspendido. Disponible en  
Solidsurface, Mármol o Lacado Color UHS.

DESIGNER  
V́ctor Carrascto

SOLIDSURFACE  
Matt White

UHS COLOUR COATING  
60 colours

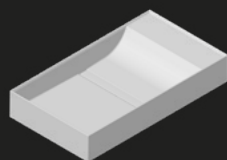
MARBLE  
White Carrara, Black Marquina, Pietra Grey

DIMENSIONS  
L60,5 W45 H13



WASHBASINS

# PARAL80



DESIGNER  
V́ctor Carrascto

SOLIDSURFACE  
Matt White

UHS COLOUR COATING  
60 colours

MARBLE  
White Carrara, Black Marquina, Pietra Grey

DIMENSIONS  
L80,5 W45 H13

PARAL80 — EN: Top or wall mounted washbasin.  
Available in Solidsurface, Marble and UHS Colour Coating.  
ES: Lavabo sobre encimera o suspendido. Disponible en  
Solidsurface, Mármol o Lacado Color UHS.



206

# PARAL100



PARAL100 — EN: Top or wall mounted washbasin.  
Available in Solidsurface, Marble and UHS Colour Coating.  
ES: Lavabo sobre encimera o suspendido. Disponible en  
Solidsurface, Mármol o Lacado Color UHS.

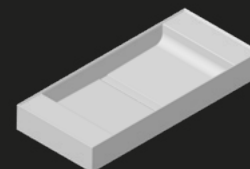
DESIGNER  
V́ctor Carrascto

SOLIDSURFACE  
Matt White

UHS COLOUR COATING  
60 colours

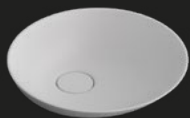
MARBLE  
White Carrara, Black Marquina, Pietra Grey

DIMENSIONS  
L100,5 W45 H13



INBANI

# FORMA45



DESIGNERS  
Ludovica + Roberto Palomba

TOPSOLID  
Matt White

UHS COLOUR COATING  
60 colours

DIMENSIONS  
ø45 H12

FORMA45 — EN: Top mounted washbasin with drain cover. Available in Topsolid or UHS Colour Coating. ES: Lavabo sobre encimera con tapa oculta desagüe incluida. Disponible en Topsolid o Lacado Color UHS.



WASHBASINS

# FORMA50



FORMA50 — EN: Top mounted washbasin with drain cover. Available in Topsolid or UHS Colour Coating. ES: Lavabo sobre encimera con tapa oculta desagüe incluida. Disponible en Topsolid o Lacado Color UHS.

DESIGNERS  
Ludovica + Roberto Palomba

TOPSOLID  
Matt White

UHS COLOUR COATING  
60 colours

DIMENSIONS  
L50 W42,5 H12



207

# FORMA60



DESIGNERS  
Ludovica + Roberto Palomba

TOPSOLID  
Matt White

UHS COLOUR COATING  
60 colours

DIMENSIONS  
L60 W40 H12

FORMA60 — EN: Top mounted washbasin with drain cover. Available in Topsolid or UHS Colour Coating. ES: Lavabo sobre encimera con tapa oculta desagüe incluida. Disponible en Topsolid o Lacado Color UHS.



INBANI

# FORMA90



FORMA90 — EN: Top mounted washbasin with drain cover. Available in Topsolid or UHS Colour Coating. ES: Lavabo sobre encimera con tapa oculta desagüe incluida. Disponible en Topsolid o Lacado Color UHS.

## DESIGNERS

Ludovica + Roberto Palomba

## TOPSOLID

Matt White

## UHS COLOUR COATING

60 colours

## DIMENSIONS

L90 W47,5 H12



WASHBASINS

# QUADRO47



CORIAN®  
Matt White

## UHS COLOUR COATING

60 colours

## DIMENSIONS

L47 W32 H13

QUADRO47 — EN: Top mounted or under mounted washbasin. Available in Corian® or UHS Colour Coating. ES: Lavabo sobre o bajo encimera. Disponible en Corian® o Lacado Color UHS.



208

# QUADRO57



QUADRO57 — EN: Top mounted or under mounted washbasin. Available in Corian® or UHS Colour Coating. ES: Lavabo sobre o bajo encimera. Disponible en Corian® o Lacado Color UHS.

CORIAN®  
Matt White

## UHS COLOUR COATING

60 colours

## DIMENSIONS

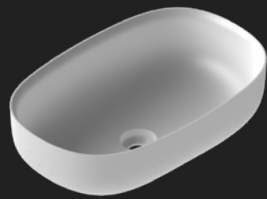
L57 W34 H14



INBANI



## OVALO



CORIAN®  
Matt White

UHS COLOUR COATING  
60 colours

DIMENSIONS  
L55 W35 H15

OVALO — EN: Top mounted or under mounted washbasin. Available in Corian® or UHS Colour Coating.  
ES: Lavabo sobre o bajo encimera. Disponible en Corian® o Lacado Color UHS.



WASHBASINS

## CERCLO

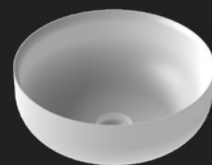


CERCLO — EN: Top mounted or under mounted washbasin. Available in Corian® or UHS Colour Coating.  
ES: Lavabo sobre o bajo encimera. Disponible en Corian® o Lacado Color UHS.

CORIAN®  
Matt White

UHS COLOUR COATING  
60 colours

DIMENSIONS  
ø41 H15



209

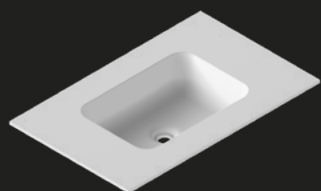
INBANI



PRODUCTS

TOPS

## QUADRO 45



CORIAN®  
Matt White

UHS COLOUR COATING  
60 colours

DIMENSIONS  
L45 W30 H12,2

QUADRO45 — EN: Top or worktop with integrated washbasin. Available in Corian® or UHS Colour Coating.  
ES: Tapa con lavabo integrado. Disponible en Corian® o Lacado Color UHS.



WASHBASINS

## QUADRO55



QUADRO55 — EN: Top or worktop with integrated washbasin. Available in Corian® or UHS Colour Coating.  
ES: Tapa con lavabo integrado. Disponible en Corian® o Lacado Color UHS.

CORIAN®  
Matt White

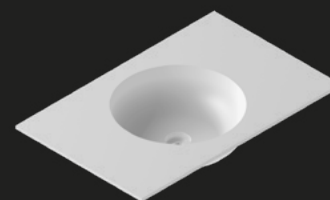
UHS COLOUR COATING  
60 colours

DIMENSIONS  
L55 W32 H12,2



212

## CERCLO



CORIAN®  
Matt White

UHS COLOUR COATING  
60 colours

DIMENSIONS  
L38 W38 H12

CERCLO — EN: Top or worktop with integrated washbasin. Available in Corian® or UHS Colour Coating.  
ES: Tapa con lavabo integrado. Disponible en Corian® o Lacado Color UHS.



INBANI

# OVALO

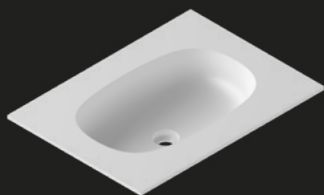


OVALO — EN: Top or worktop with integrated washbasin. Available in Corian® or UHS Colour Coating. ES: Tapa con lavabo integrado. Disponible en Corian® o Lacado Color UHS.

CORIAN®  
Matt White

UHS COLOUR COATING  
60 colours

DIMENSIONS  
L52 W33 H12



WASHBASINS

# D1



CORIAN®  
Matt White

UHS COLOUR COATING  
60 colours

DIMENSIONS  
L55 W35 H12

D1 — EN: Top or worktop with integrated washbasin. Available in Corian® or UHS Colour Coating. ES: Tapa o encimera con lavabo integrado. Disponible en Corian® o Lacado Color UHS.



213

# D2



D2 — EN: Top or worktop with integrated washbasin. Available in Corian® or UHS Colour Coating. ES: Tapa con lavabo integrado. Disponible en Corian® o Lacado Color UHS.

CORIAN®  
Matt White

UHS COLOUR COATING  
60 colours

DIMENSIONS  
L68 W35 H12



INBANI

D4



CORIAN®  
Matt White

UHS COLOUR COATING  
60 colours

DIMENSIONS  
L43 W33 H10

D4 — EN: Top or worktop with integrated washbasin.  
Available in Corian® or UHS Colour Coating. ES: Tapa con  
lavabo integrado. Disponible en Corian® o Lacado Color  
UHS.



WASHBASINS

G1



G1 — EN: Top or worktop with integrated washbasin.  
Available in Corian® or UHS Colour Coating. ES: Tapa con  
lavabo integrado. Disponible en Corian® o Lacado Color  
UHS.

CORIAN®  
Matt White

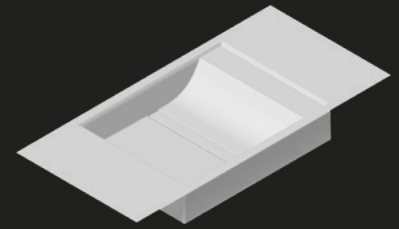
UHS COLOUR COATING  
60 colours

DIMENSIONS  
L65 W33 H12



214

PARAL60



DESIGNER  
Victor Carrasco

SOLIDSURFACE  
Matt White

UHS COLOUR COATING  
60 colours

DIMENSIONS  
L58 W44

PARAL60 — EN: Top or worktop with integrated  
washbasin. Available in Solidsurface or UHS Colour  
Coating. ES: Tapa o encimera con lavabo integrado.  
Disponible en Solidsurface o Lacado Color UHS.



INBANI

## GT50



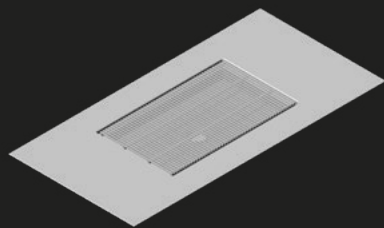
GT50 — EN: Top or worktop with under mounted washbasin and removable grill. Available in Solidsurface, Marble or UHS Colour Coating. ES: Tapa o encimera con lavabo bajo encimera y rejilla extraíble. Disponible en Solidsurface, Mármol o Lacado Color UHS.

SOLIDSURFACE  
Matt White

UHS COLOUR COATING  
60 colours

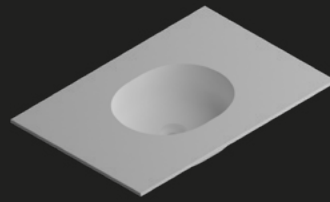
MARBLE (ONLY TOP)  
White Carrara, Black Marquina, Pietra Grey

DIMENSIONS  
L50 W30



WASHBASINS

## GIRO35



DESIGNERS  
Ludovica+Roberto Palomba

SOLIDSURFACE  
Matt White

UHS COLOUR COATING  
60 colours

DIMENSIONS  
L35 W28

GIRO35 — EN: Top or worktop with integrated washbasin. Available in Solidsurface or UHS Colour Coating. ES: Tapa o encimera con lavabo integrado. Disponible en Solidsurface o Lacado Color UHS.



215

## GIRO55



GIRO55 — EN: Top or worktop with integrated washbasin. Available in Solidsurface or UHS Colour Coating. ES: Tapa o encimera con lavabo integrado. Disponible en Solidsurface o Lacado Color UHS.

DESIGNERS  
Ludovica+Roberto Palomba

SOLIDSURFACE  
Matt White

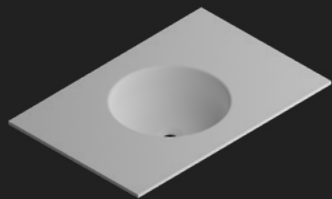
UHS COLOUR COATING  
60 colours

DIMENSIONS  
L53 W33



INBANI

# PRIME



DESIGNER  
Norm Architects

SOLIDSURFACE  
Matt White

UHS COLOUR COATING  
60 colours

DIMENSIONS  
Ø35

PRIME — EN: Top or worktop with integrated washbasin. Available in Solidsurface or UHS Colour Coating. ES: Tapa o encimera con lavabo integrado. Disponible en Solidsurface o Lacado Color UHS.



WASHBASINS

# FLOAT

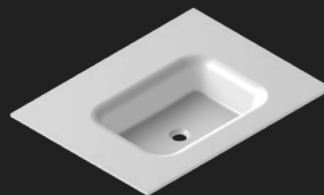


FLOAT — EN: Top or worktop with integrated washbasin. Available in Solidsurface or UHS Colour Coating. ES: Tapa o encimera con lavabo integrado. Disponible en Solidsurface o Lacado Color UHS.

SOLIDSURFACE  
Matt White

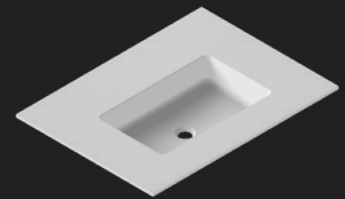
UHS COLOUR COATING  
60 colours

DIMENSIONS  
L52 W37



216

# H2-H5-H6-H8



SOLIDSURFACE  
Matt White

UHS COLOUR COATING  
60 colours

DIMENSIONS  
H2 - L47 W28,5  
H5 - L64 W29,2  
H6 - L45 W25  
H8 - L80 W30

H2, H5, H6, H8 — EN: Top or worktop with integrated washbasin. Available in Solidsurface or UHS Colour Coating. ES: Tapa o encimera con lavabo integrado. Disponible en Solidsurface o Lacado Color UHS.



INBANI



# HO



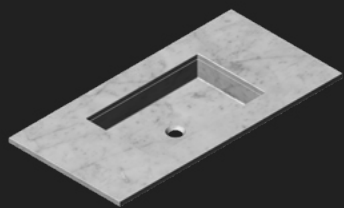
HO — EN: 20mm top with integrated washbasin. Available in Marble. ES: Tapa con lavabo integrado. Espesor 20mm. Disponible en mármol.

MARBLE

White Carrara, Black Marquina, Pietra Grey

DIMENSIONS

L50 W30



WASHBASINS

# M54



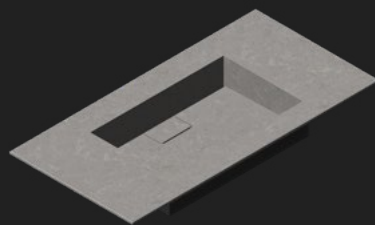
M54 50 — EN: top or worktop with integrated washbasin. Available in MDI. ES: Tapa o encimera con lavabo integrado. Disponible en MDI.

MDI

Eros, Ghost, Raw, Solar

DIMENSIONS

L54 W32



217

INBANI

PRODUCTS

BATH  
TUBS



# FORMA



DESIGNERS  
Ludovica + Roberto Palomba

TOPSOLID  
Matt White

UHS COLOUR COATING  
60 colours

DIMENSIONS  
L160 W80 H53

FORMA BATHTUB — EN: Matt Topsolid freestanding bathtub. With overflow. Matt Topsolid waste and PVC siphon. ES: Bañera exenta en Topsolid mate. Con rebosadero. Válvula en Topsolid mate y sifón en PVC.



BATHTUBS

# FORMA XL



FORMA XL BATHTUB — EN: Matt Topsolid freestanding bathtub. With overflow. Matt Topsolid waste and PVC siphon. ES: Bañera exenta en Topsolid mate. Con rebosadero. Válvula en Topsolid mate y sifón en PVC.

DESIGNERS  
Ludovica + Roberto Palomba

TOPSOLID  
Matt White

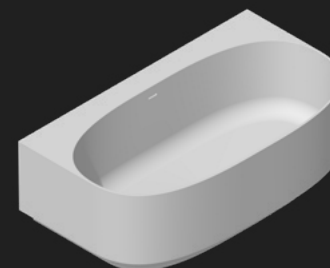
UHS COLOUR COATING  
60 colours

DIMENSIONS  
L190 W150 H53



220

# ARC160



DESIGNERS  
Norm Architects

TOPSOLID  
Matt White

UHS COLOUR COATING  
60 colours

DIMENSIONS  
L160 W90,5 H53

ARC160 BATHTUB — EN: Matt wall-mounted bathtub in Topsolid. Matt Topsolid valve and PVC syphon. ES: Bañera a pared en Topsolid mate. Con rebosadero. Válvula en Topsolid (M) mate y sifón en PVC.



INBANI

# ARC150



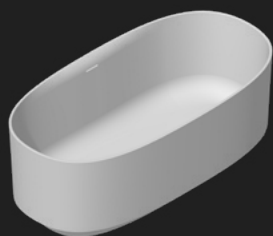
ARC 150 BATHTUB — EN: Matt Solidsurface freestanding bathtub. With overflow. Matt Solidsurface waste and PVC siphon. ES: Bañera exenta en Solidsurface mate. Con rebosadero. Válvula en Solidsurface mate y sifón en PVC.

DESIGNER  
Norm Architects

SOLIDSURFACE  
Matt White

UHS COLOUR COATING  
60 colours

DIMENSIONS  
L150 W76 H53



BATHTUBS

# ARC125



DESIGNER  
Norm Architects

SOLIDSURFACE  
Matt White

UHS COLOUR COATING  
60 colours

DIMENSIONS  
ø125 H53

ARC 125 BATHTUB — EN: Matt Solidsurface freestanding bathtub. With overflow. Matt Solidsurface waste and PVC siphon. ES: Bañera exenta en Solidsurface mate. Con rebosadero. Válvula en Solidsurface mate y sifón en PVC.



221

# HERITAGE



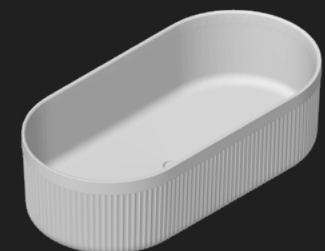
HERITAGE BATHTUB — EN: Matt Solidsurface freestanding bathtub. With overflow. Matt Solidsurface waste and PVC siphon. ES: Bañera exenta en Solidsurface mate. Con rebosadero. Válvula en Solidsurface mate y sifón en PVC.

DESIGNERS  
Patrick Norguet

SOLIDSURFACE  
Matt White

UHS COLOUR COATING  
60 colours

DIMENSIONS  
L180 W90 H50



INBANI

# ORIGIN



DESIGNER  
Seung-Yong Song

SOLIDSURFACE  
Matt White

UHS COLOUR COATING  
60 colours

DIMENSIONS  
Ø105 H55

ORIGIN BATHTUB — EN: Matt Solidsurface freestanding bathtub. With overflow. Matt Solidsurface waste and PVC siphon included. ES: Bañera exenta en Solidsurface mate. Con rebosadero. Válvula en Solidsurface mate y sifón en PVC incluidos.



BATHTUBS

# PRIME



PRIME BATHTUB — EN: Matt Solidsurface freestanding bathtub. With overflow. Matt Solidsurface waste and PVC siphon included. ES: Bañera exenta en Solidsurface mate. Con rebosadero. Válvula en Solidsurface mate y sifón en PVC incluidos.

DESIGNERS  
Norm Architects

SOLIDSURFACE  
Matt White

UHS COLOUR COATING  
60 colours

DIMENSIONS  
L175 W82 H53



222

# VESTA



SOLIDSURFACE  
Matt White

UHS COLOUR COATING  
60 colours

DIMENSIONS  
L160 W80 H55

VESTA BATHTUB — EN: Matt Solidsurface freestanding bathtub. With overflow. Matt Solidsurface waste and PVC siphon included. ES: Bañera exenta en Solidsurface mate. Con rebosadero. Válvula en Solidsurface mate y sifón en PVC incluidos.



INBANI

# TEMPLE



TEMPLE BATHTUB — EN: att Solidsurface freestanding bathtub. With overflow. Matt Solidsurface waste and PVC siphon included. ES: Bañera exenta en Solidsurface mate. Con rebosadero. Válvula en Solidsurface mate y sifón en PVC incluidos.

SOLIDSURFACE  
Matt White

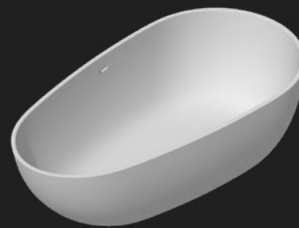
UHS COLOUR COATING  
60 colours

DIMENSIONS  
L180 W90 H54



BATHTUBS

# GOUT



SOLIDSURFACE  
Matt White

UHS COLOUR COATING  
60 colours

DIMENSIONS  
L175 W100 H51

GOUT BATHTUB — EN: Matt Solidsurface freestanding bathtub. With overflow. Matt Solidsurface waste and PVC siphon included .ES: Bañera exenta en Solidsurface mate. Con rebosadero. Válvula en Solidsurface mate y sifón en PVC incluidos.







PRODUCTS

WAR  
DROBES

# STRATO FLOORSTANDING



## STRUCTURE

Natural Wood S1 (8 tones)  
Wild Oak Wood S3 (8 tones)  
Raw Oak Wood S4 (4 tones)  
Matt / Glossy / Textured lacquer

## DOORS

Natural Wood S1 (8 tones)  
Wild Oak Wood S3 (8 tones)  
Raw Oak Wood S4 (4 tones)  
Untinted / Grey / Bronze / Fluted Glass  
Untinted / Grey / Bronze Mirror

## DIMENSIONS

L50-100 W50-60 H200-280

# STRATO WALL MOUNTED



## STRUCTURE

Natural Wood S1 (8 tones)  
Wild Oak Wood S3 (8 tones)  
Raw Oak Wood S4 (4 tones)  
Matt / Glossy / Textured lacquer

## DOORS

Natural Wood S1 (8 tones)  
Wild Oak Wood S3 (8 tones)  
Raw Oak Wood S4 (4 tones)  
Untinted / Grey / Bronze / Fluted Glass  
Untinted / Grey / Bronze Mirror

## DIMENSIONS

L50-100 W40-50 H150-180



# STRATO RECESSED



## STRUCTURE

Natural Wood S1 (8 tones)  
Wild Oak Wood S3 (8 tones)  
Raw Oak Wood S4 (4 tones)  
Anthracite

## DOORS

Natural Wood S1 (8 tones)  
Wild Oak Wood S3 (8 tones)  
Raw Oak Wood S4 (4 tones)  
Untinted / Grey / Bronze / Fluted Glass  
Untinted / Grey / Bronze Mirror

## DIMENSIONS

L50-100 W40-50 H150-180



# GRATE



WARDROBES  
Floor standing

WOODS  
Wild Oak S3 (8 tones)

DIMENSIONS  
L100 W50 H200  
L200 W50 H200

LEGS  
Brushed Graphite aluminum



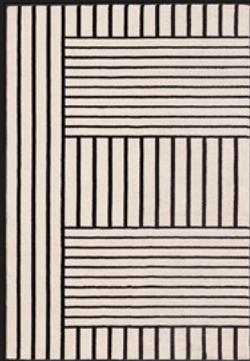


PRODUCTS



RUGS

TATAMI



BEIGE-BLACK  
Vegan rug

DIMENSIONS  
L120 W80

FINISHES  
Polyamide (312,000 tufts/m<sup>2</sup>)

TATAMI



OLIVE-BLACK  
Vegan rug

DIMENSIONS  
L120 W80

FINISHES  
Polyamide (312,000 tufts/m<sup>2</sup>)

TATAMI

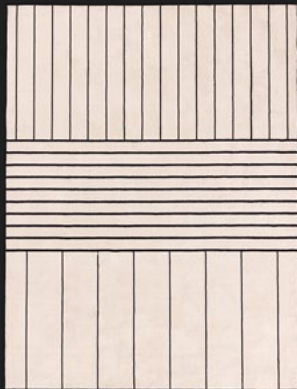


SIERRA-BLACK  
Vegan rug

DIMENSIONS  
L120 W80

FINISHES  
Polyamide (312,000 tufts/m<sup>2</sup>)

TATAMI

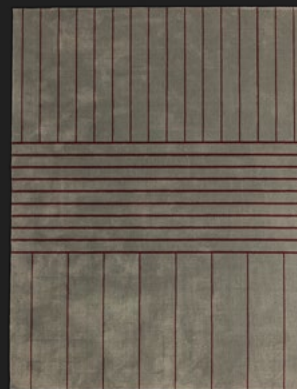


BEIGE-BLACK  
Vegan rug

DIMENSIONS  
L200 W150

FINISHES  
Polyamide (312,000 tufts/m<sup>2</sup>)

TATAMI

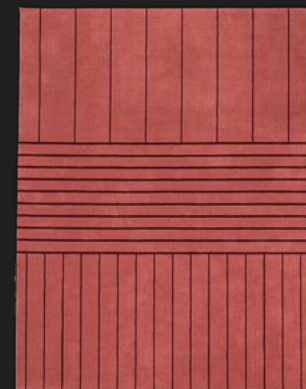


OLIVE-CARMINE  
Vegan rug

DIMENSIONS  
L200 W150

FINISHES  
Polyamide (312,000 tufts/m<sup>2</sup>)

TATAMI



SIERRA-CARMINE  
Vegan rug

DIMENSIONS  
L200 W150

FINISHES  
Polyamide (312,000 tufts/m<sup>2</sup>)



LINED COURT



BEIGE-CARMINE-INDIGO  
Vegan rug

DIMENSIONS  
L150 W100

FINISHES  
Polyamide (312,000 tufts/m<sup>2</sup>)

LINED COURT



OLIVE-MUSTARD-BEIGE  
Vegan rug

DIMENSIONS  
L150 W100

FINISHES  
Polyamide (312,000 tufts/m<sup>2</sup>)

LINED COURT



SIERRA-OLIVE-BEIGE  
Vegan rug

DIMENSIONS  
L150 W100

FINISHES  
Polyamide (312,000 tufts/m<sup>2</sup>)

PRODUCTS



# ACCE SSORIES



## NORM TABLE



NORM TABLE ROUND  
Self-supporting table

DIMENSIONS  
ø36 H66

FINISHES  
Textured Lacquer  
Wild Oak S3

## NORM TABLE



NORM TABLE OVAL  
Self-supporting table

DIMENSIONS  
L60 W35,8 H66

FINISHES  
Textured Lacquer  
Wild Oak S3

## BIVIO



BIVIO  
Freestanding tower rack

DIMENSIONS  
(ø32) W62 H70

FINISHES  
Textured Lacquer  
Marble

## TRAY



TRAY  
Freestanding tower rack

DIMENSIONS  
ø38 H80

FINISHES  
Textured Lacquer  
Wild Oak S3

## TRAY



TRAY  
Freestanding tower rack

DIMENSIONS  
L54 W22 H58

FINISHES  
Textured Lacquer  
Wild Oak S3

## GRATE



GRATE  
Freestanding bench

DIMENSIONS  
L50-150 W37 H37

FINISHES  
Marble  
Wild Oak S3  
Brushed Graphite Aluminum (legs)

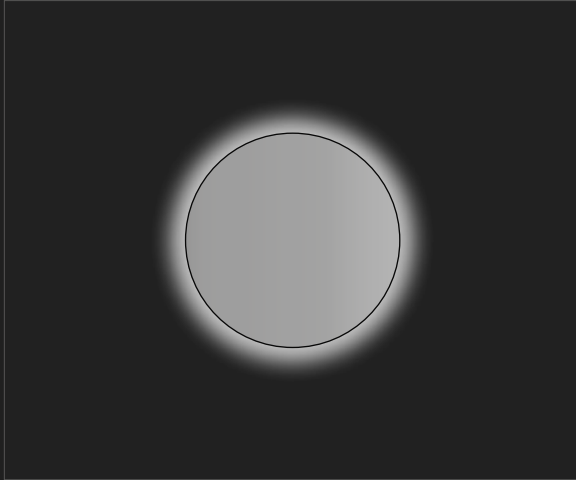


PRODUCTS

MIR  
RORS

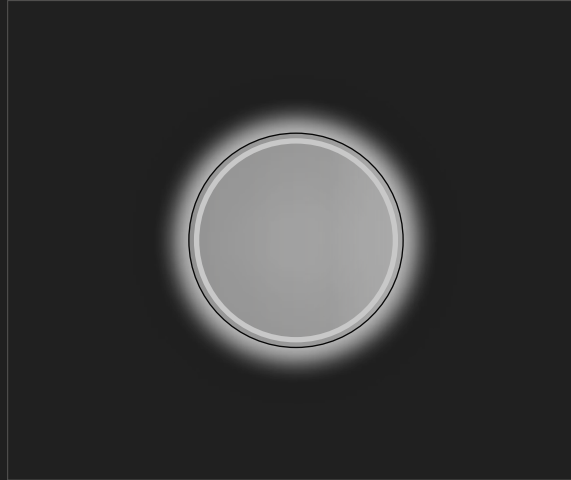


## STRATO ROUND



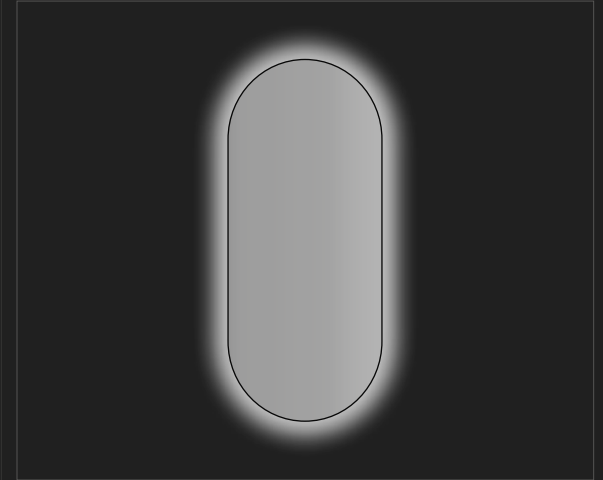
STRATO ROUND — EN: Mirror with back frame in matt white and visible opal diffuser. Perimeter wall LED lighting.  
ES: Espejo sobre trasera blanco mate y difusor opal visible. Iluminación LED perimetral mural.  
Measurements | Dimensiones: Ø50-180

## STRATO ROUNDSTRIPE



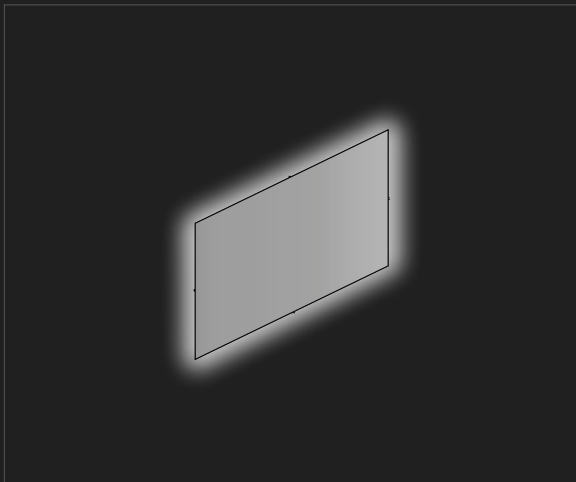
STRATO ROUNDSTRIPE — EN: Mirror with perimeter LED stripe. Perimeter wall and frontal LED lighting.  
ES: Espejo sobre trasera blanco mate y difusor opal visible. Iluminación LED perimetral mural.  
Measurements | Dimensiones: Ø50-180

## STRATO OVAL



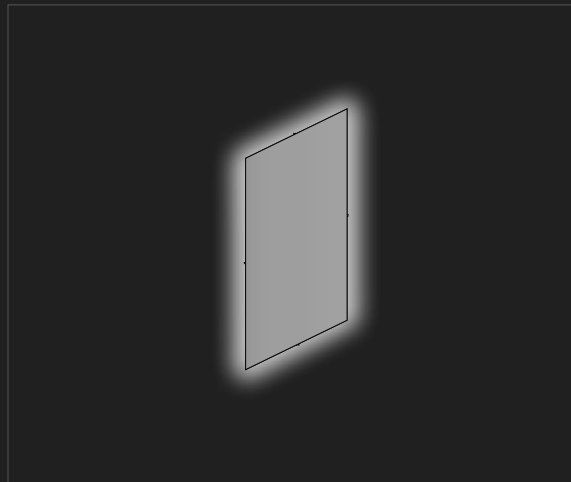
STRATO OVAL — EN: Oval mirror. Led lighting can be added. Horizontal or Vertical positioning. ES: Espejo sobre trasera blanco mate y difusor opal visible. Iluminación LED perimetral mural. Posición vertical u horizontal.  
Measurements | Dimensiones: L60 W3 H80-180

## STRATO 16A



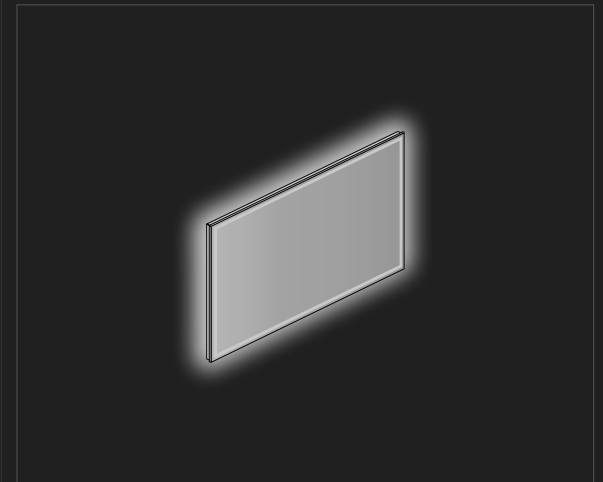
STRATO16A — EN: Mirror with aluminum structure and extra-small back frame, visible opal diffuser. Perimeter wall LED lighting. ES: Espejo sobre estructura de aluminio y difusor opal visible de fondo extra reducido. Iluminación LED perimetral mural.  
Measures:Dimensiones: L60-300 W2 H60-122

## STRATO 7J



STRATO 7J — EN: Mirror with aluminum structure and extra-small back frame, visible opal diffuser. Perimeter wall LED lighting. ES: Espejo sobre estructura de aluminio y difusor opal visible de fondo extra reducido. Iluminación LED perimetral mural.  
Measurements | Dimensiones: L50-60 W2 H50-210

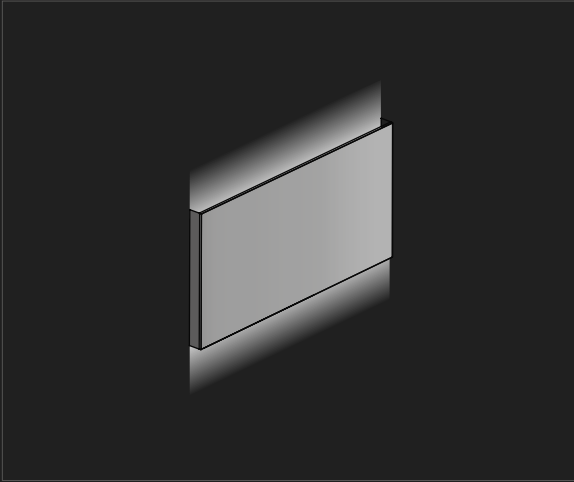
## STRATO16C



STRATO 16C — EN: Mirror with perimeter LED stripe and aluminum structure. ES: Espejo con franja arenada perimetral sobre estructura de aluminio y difusor opal visible de fondo extra reducido.  
Measurements | Dimensiones: L60-300 W2 H60-122

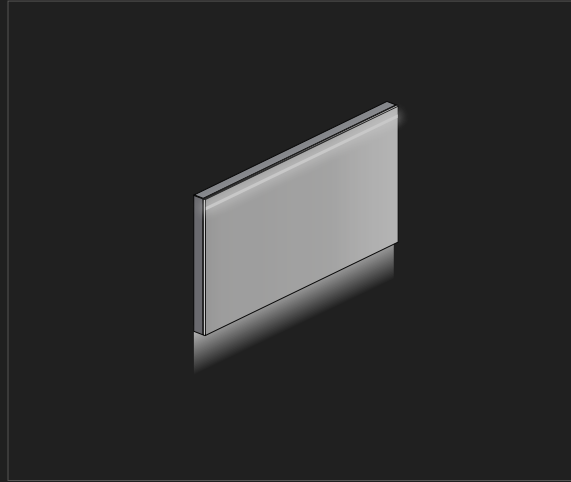


## STRATO4A



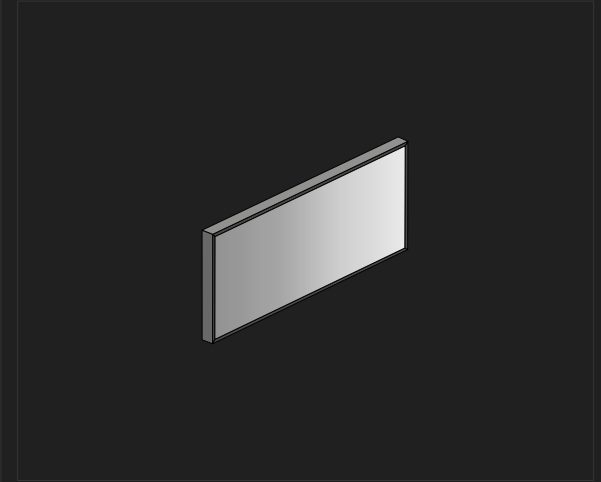
STRATO 4A — EN: Mirror with side frames in inox steel. Wall upper and nether LED lighting. ES: Espejo sobre estructura con laterales en acero inoxidable pulido. Iluminación LED superior e inferior mural. Measurements | Dimensiones: L60-300 W3 H60-100

## STRATO15A



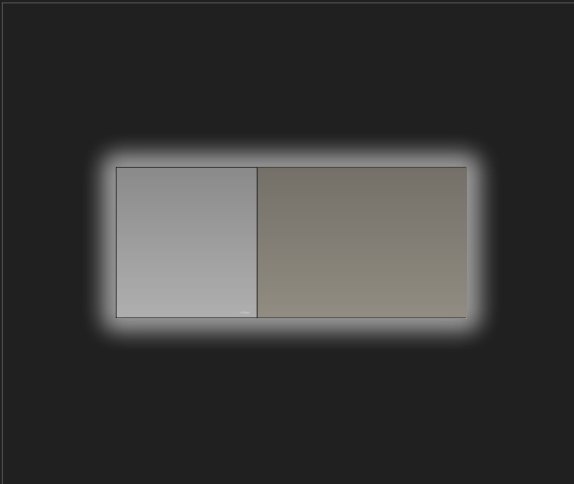
STRATO 15A — EN: Mirror with side frames in inox steel. Horizontal LED stripe. Wall nether LED lighting. ES: Espejo sobre estructura con laterales en acero inoxidable pulido. Franja arenada horizontal. Iluminación LED inferior mural. Measurements | Dimensiones: L60-300 W2 H60-122

## STRATO FRAME I2



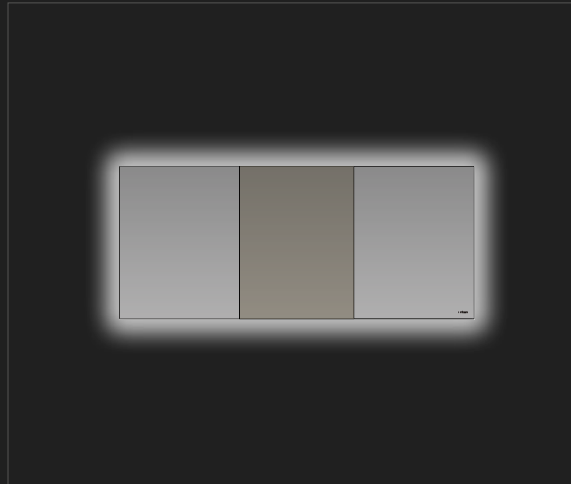
STRATO FRAME I2 — EN: Mirror with mitered frame. Frame of 2x7cm. ES: Espejo con marco en inglete de 2x7cm. Measurements | Dimensiones: L40-300 W7 H60-80

## DECO11



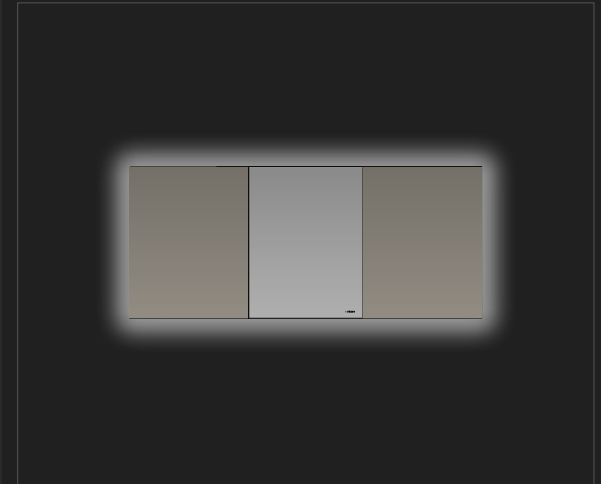
DECO11 — EN: Mirror formed by different mirror sections. With aluminum structure and opal diffuser, perimeter wall LED lighting. ES: Espejo compuesto por diferentes tramos de luna espejo. Estructura de aluminio y difusor opal. Iluminación LED perimetral mural. Measurements | Dimensiones: L60-300 W2 H80-100

## DECO12



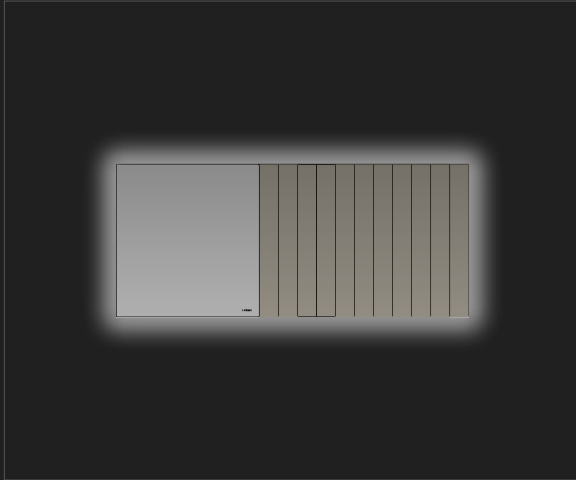
DECO12 — EN: Mirror formed by different mirror sections. With aluminum structure and opal diffuser, perimeter wall LED lighting. ES: Espejo compuesto por tramos de luna espejo. Estructura de aluminio y difusor opal. Iluminación LED perimetral mural. Measurements | Dimensiones: L100-300 W2 H80-100

## DECO13



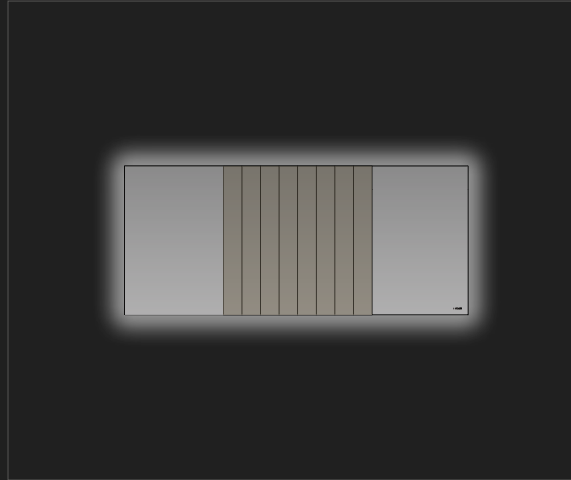
DECO13 — EN: Mirror formed by different mirror sections. With aluminum structure and opal diffuser, perimeter wall LED lighting. ES: Espejo compuesto por tramos de luna espejo. Sobre estructura de aluminio y difusor opal. Iluminación LED perimetral mural. Measurements | Dimensiones: L60-300 W2 H80-100

## DECO21



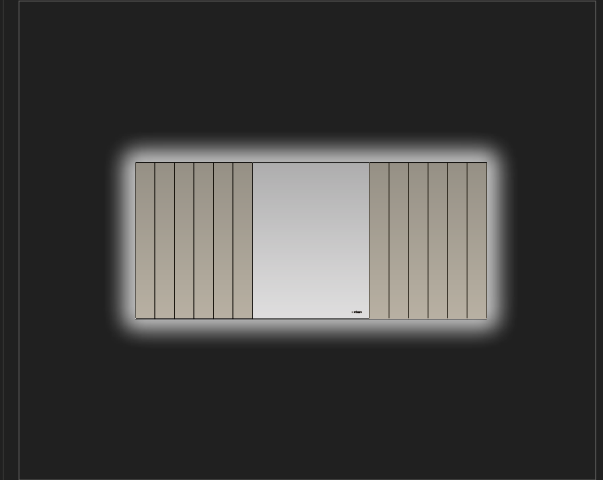
DECO 21 — EN: Mirror formed by different mirror sections. With aluminum structure and opal diffuser, perimeter wall LED lighting. ES: Espejo compuesto por tramos de luna espejo. Sobre estructura de aluminio y difusor opal. Iluminacion LED perimetral mural.  
Measurements | Dimensiones: L60-300 W2 H80-100

## DECO22



DECO 22 — EN: Mirror formed by different mirror sections. With aluminum structure and opal diffuser, perimeter wall LED lighting. ES: Espejo compuesto por tramos de luna espejo. Sobre estructura de aluminio y difusor opal. Iluminacion LED perimetral mural.  
Measurements | Dimensiones: L60-300 W2 H80-100

## DECO23



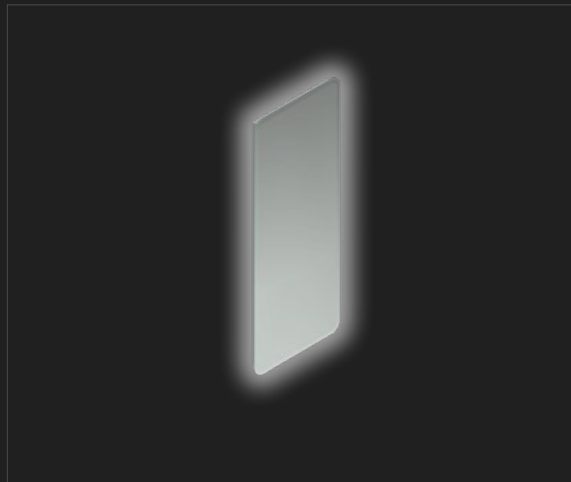
DECO 23 — EN: Mirror formed by different mirror sections. With aluminum structure and opal diffuser, perimeter wall LED lighting. ES: Espejo compuesto por tramos de luna espejo. Sobre estructura de aluminio y difusor opal. Iluminacion LED perimetral mural.  
Measurements | Dimensiones: L60-300 W2 H80-100

## ORIGIN HORIZONTAL



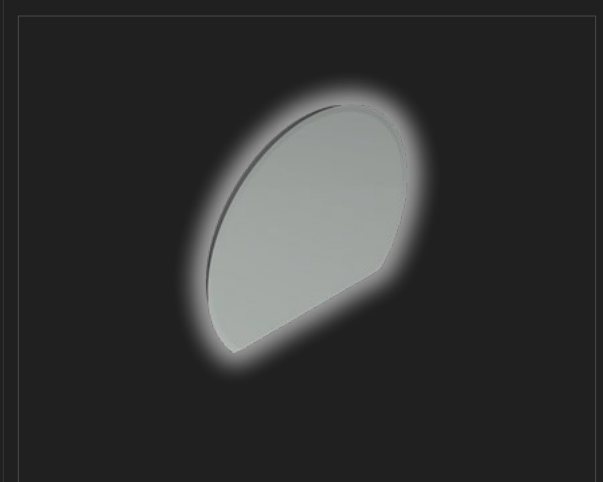
ORIGIN HORIZONTAL — EN: Beveled mirror with Led Lighting. ES: Espejo con bisel e iluminación LED.  
Measurements | Dimensiones: L78-218 W2 H85-150

## ORIGIN VERTICAL



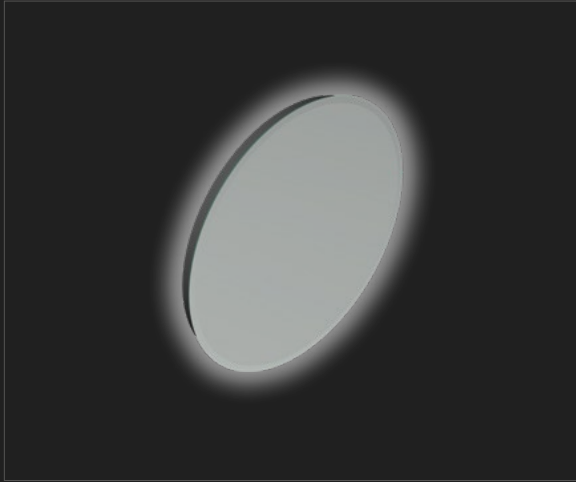
ORIGIN VERTICAL — EN: Beveled mirror with LED Lighting. ES: Espejo con bisel e iluminación LED.  
Measurements | Dimensiones: L50-60 W2 H85-190

## ORIGIN SEMICIRCLE



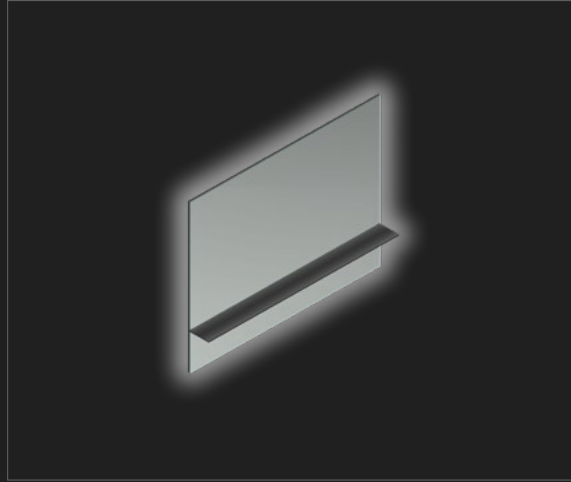
ORIGIN SEMICIRCLE — EN: Beveled mirror with LED Lighting. ES: Espejo con bisel e iluminación LED.  
Measurements | Dimensiones: Ø120-140 H104-123,5

## ORIGIN CIRCLE



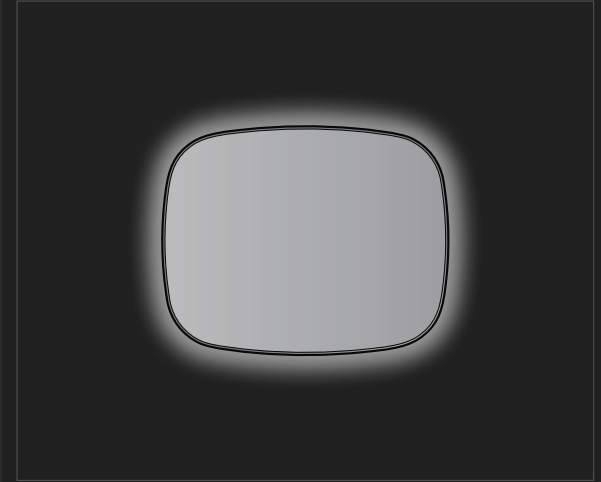
ORIGIN CIRCLE — EN: Beveled mirror with LED Lighting. ES: Espejo con bisel e iluminación LED. Measurements | Dimensiones: Ø80-180

## GRATE H80



GRATE H80 — EN: Framed mirror with aluminum shelf in brushed Graphite. Perimeter wall LED lighting. ES: Espejo con marco y estante en aluminio acabado Grafito Cepillado. Iluminación LED perimetral. Measurements | Dimensiones: L50-200 W2,5 H80

## FORMA HORIZONTAL



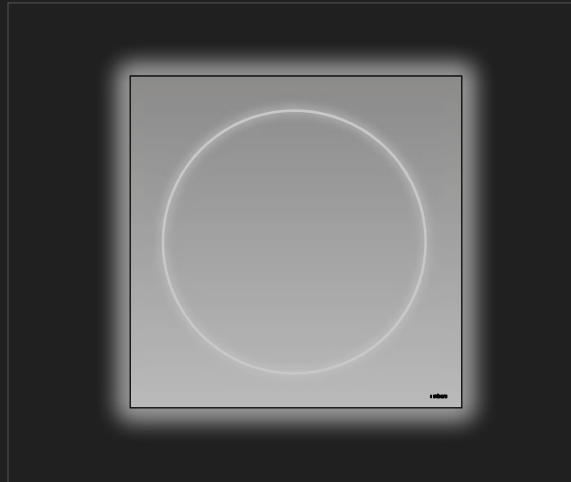
FORMA HORIZONTAL — EN: Beveled mirror with Led Lighting. ES: Espejo con bisel e iluminación LED. Measurements | Dimensiones: L80-140 W3 H80

## FORMA VERTICAL



FORMA VERTICAL — EN: Beveled mirror with Led Lighting. ES: Espejo con bisel e iluminación LED. Measurements | Dimensiones: L70-100 W3 H110

## ALO ROUND



ALO ROUND — EN: Mirror with round LED stripe with back frame in matt white and visible opal diffuser. Perimeter wall and frontal LED lighting. ES: Espejo con franja arenada circular sobre trasera blanco mate y difusor opal visible. Iluminación LED perimetral frontal y mural. Measurements | Dimensiones: L80-200 W3 H80-200

## ALO OVAL



ALO OVAL — EN: Mirror with round LED stripe with back frame in matt white and visible opal diffuser. Perimeter wall and frontal LED lighting. ES: Espejo con franja arenada circular sobre trasera blanco mate y difusor opal visible. Iluminación LED perimetral frontal y mural. Measurements | Dimensiones: L80 W3 H100-200

AP

N

DI

PE

---

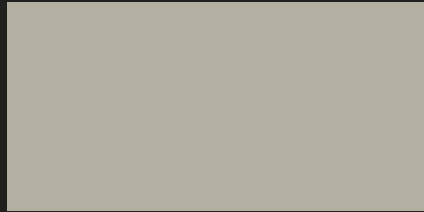
X

IV.

# NEW COLOURS MMXXII



181 Beige



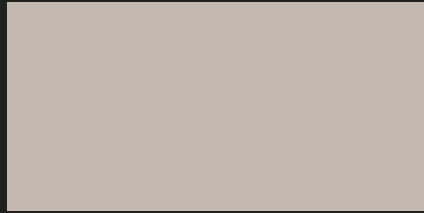
185 Light Grey



189 Steel



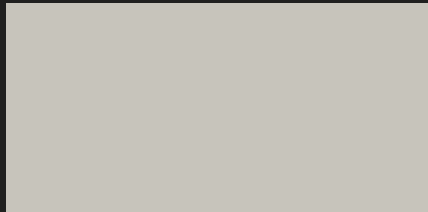
182 Ivory



195 Arena Grey



193 Basalto



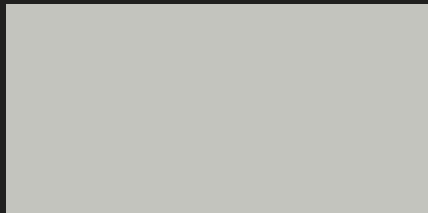
183 Petra



186 Cement Grey



190 Olive



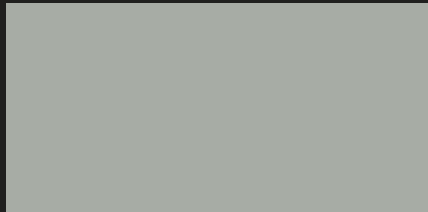
184 Silk



194 Natural Grey



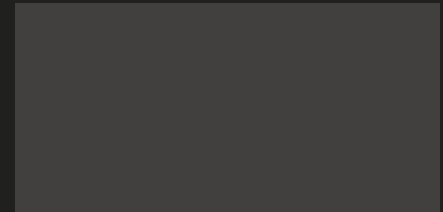
191 Arcilla



188 Silver

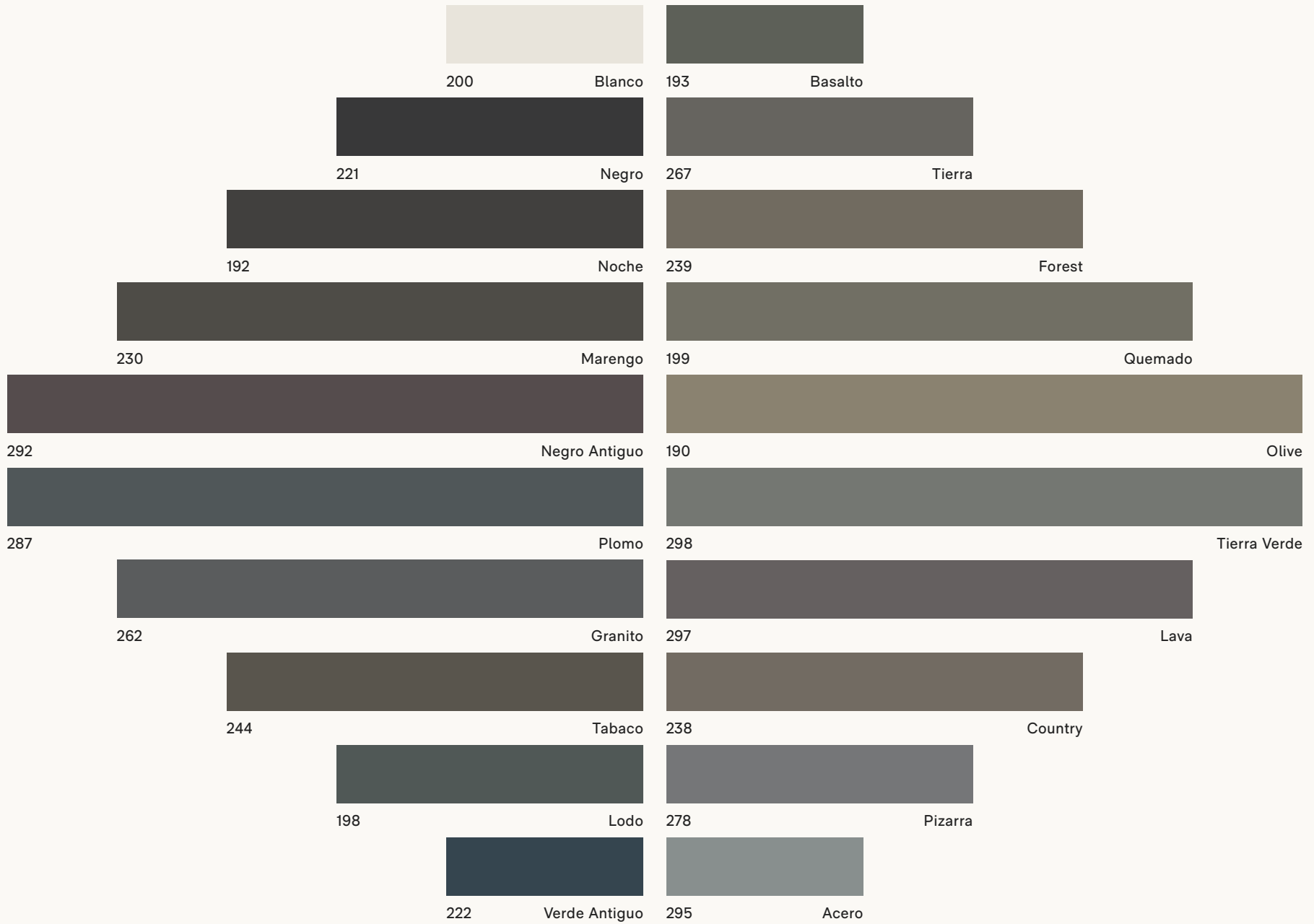


187 Concrete Grey



192 Noche

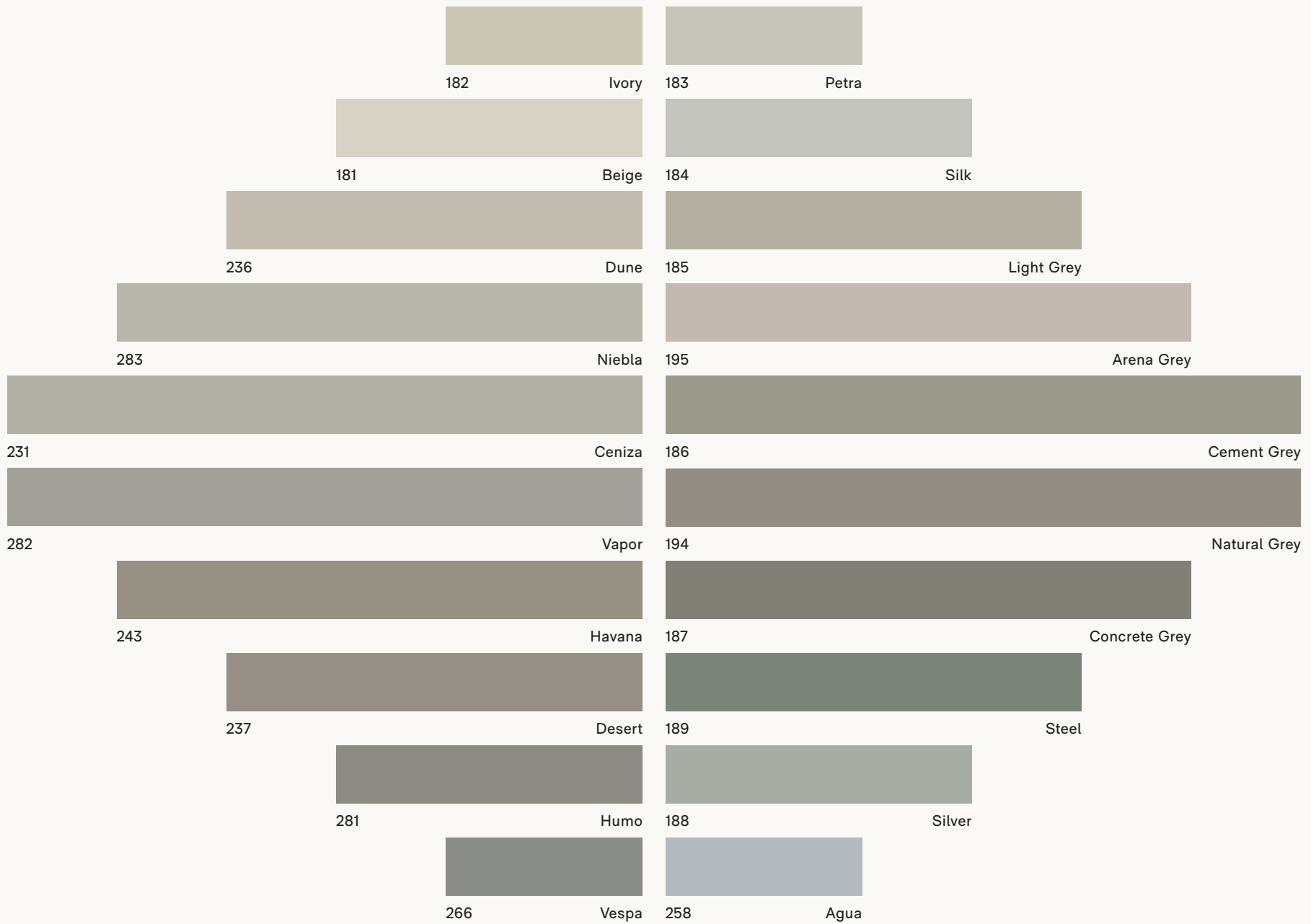
# COLOURS



EN — All colours are available in UHS Colour Coating, Glossy Lacquer LB, Matt Lacquer LM, Textured Lacquer LT, Glossy Glass CB and matt Glass CM. Any colour from the RAL or NCS can also be made with an increase of 250 Points on top of the retail price.

ES — Todos los colores se encuentran disponibles en los acabados Lacado Color UHS, Laca Brillo LB, Laca Mate LM, Laca Texturizada LT, Cristal Brillo CB y Cristal Mate CM. Realizamos colores bajo la carta RAL o NCS con un incremento de 250 Puntos PVP por pedido.

# COLOURS

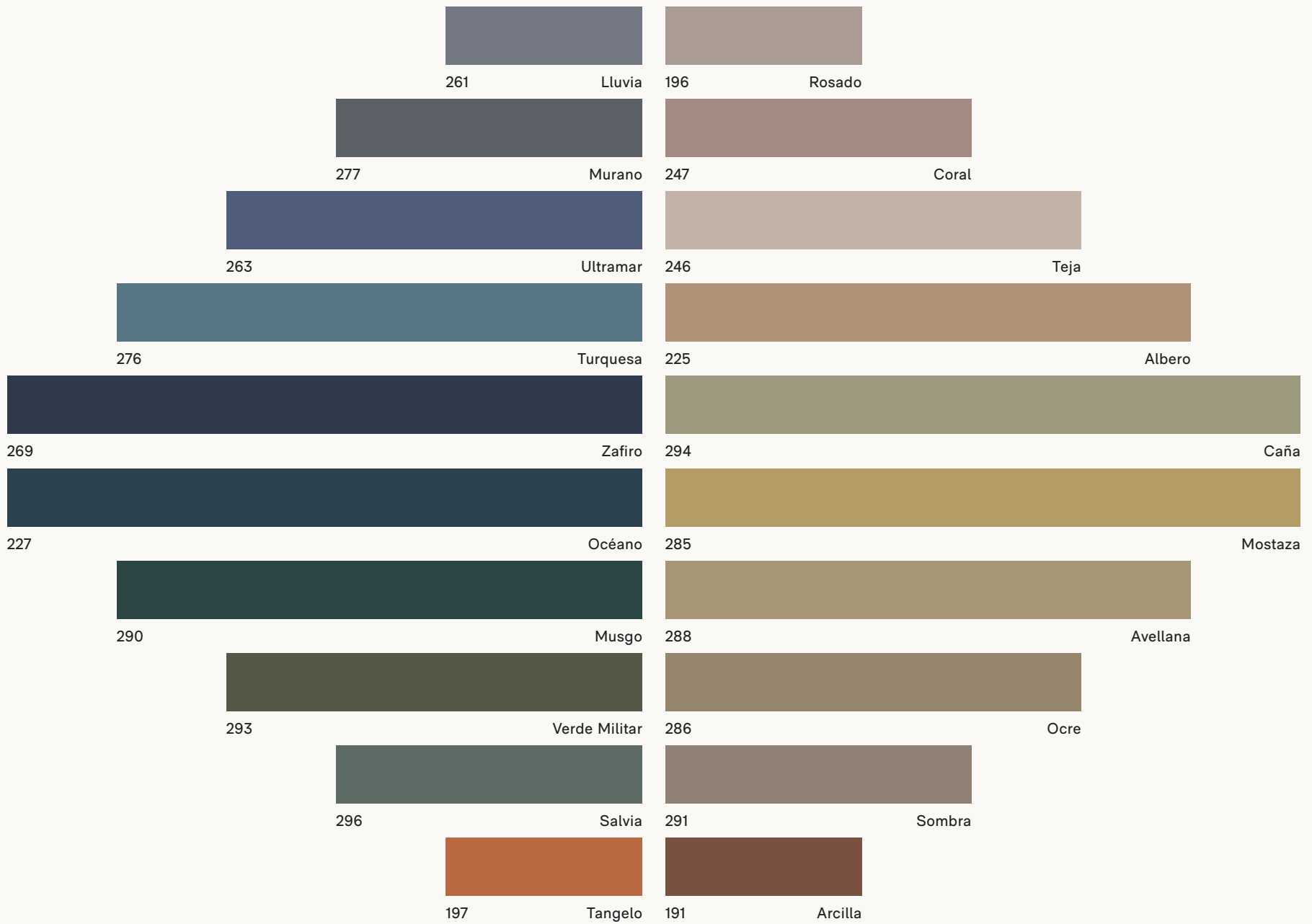


EN — All colours are available in UHS Colour Coating, Glossy Lacquer LB, Matt Lacquer LM, Textured Lacquer LT, Glossy Glass CB and matt Glass CM. Any colour from the RAL or NCS can also be made with an increase of 250 Points on top of the retail price.

ES — Todos los colores se encuentran disponibles en los acabados Lacado Color UHS, Laca Brillo LB, Laca Mate LM, Laca Texturizada LT, Cristal Brillo CB y Cristal Mate CM. Realizamos colores bajo la carta RAL o NCS con un incremento de 250 Puntos PVP por pedido.



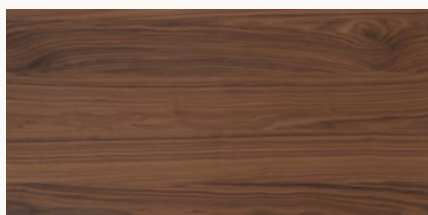
# COLOURS



EN — All colours are available in UHS Colour Coating, Glossy Lacquer LB, Matt Lacquer LM, Textured Lacquer LT, Glossy Glass CB and matt Glass CM. Any colour from the RAL or NCS can also be made with an increase of 250 Points on top of the retail price.

ES — Todos los colores se encuentran disponibles en los acabados Lacado Color UHS, Laca Brillo LB, Laca Mate LM, Laca Texturizada LT, Cristal Brillo CB y Cristal Mate CM. Realizamos colores bajo la carta RAL o NCS con un incremento de 250 Puntos PVP por pedido.

# WOODS



S1 - 430 Natural Walnut



S1 - 416 Bronzed Natural Oak



S4 - 602 Natural Raw Oak



S1 - 401 Natural Oak



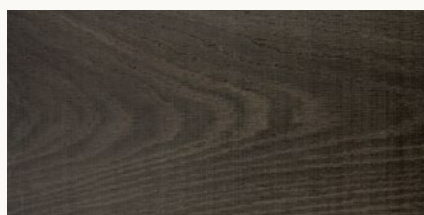
S1 - 415 Antracita Natural Oak



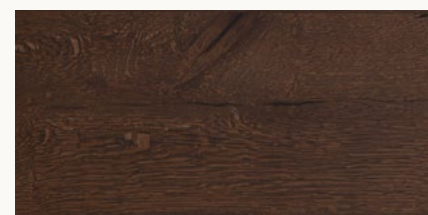
S4 - 603 Golden Raw Oak



S1 - 408 Mist Natural Oak



S1 - 455 Grey Sawn Oak



S4 - 656 Bronzed Raw Oak



S1 - 409 Shadow Natural Oak



S1 - 442 Natural Sawn Oak



S4 - 655 Grey Raw Oak

## S1 NATURAL & SAWN OAK

EN — Water-resistant MDF 0.6 mm wooden boards with a wax feel.

ES — Tableros MDF-Hidrófugo chapado en Madera Natural 0,6 mm con tacto cera.

## S4 RAW OAK

EN — European natural solid oak and filled with water resistant MDF parts.

ES — Lamas de roble natural europeo y macizado con tablero de MDF-Hidrófugo.

# WOODS



S3 - 502 Natural Wild Oak



S3 - 551 Tanned Wild Oak



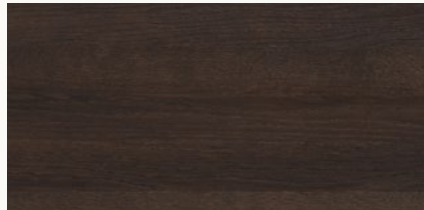
S3 - 508 Mist Wild Oak



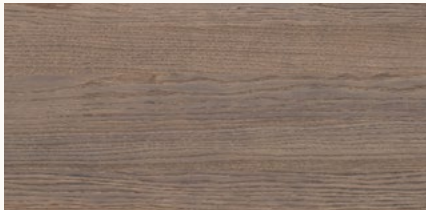
S3 - 555 Grey Wild Oak



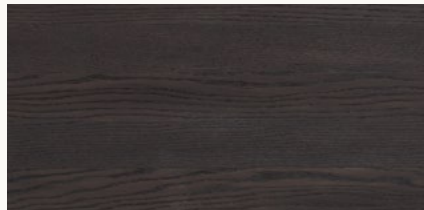
S3 - 509 Shadow Wild Oak



S3 - 556 Bronzed Wild Oak



S3 - 553 Dried Wild Oak



S3 - 557 Smoked Wild Oak

## S3 WILD OAK

EN — European natural solid oak and filled with water resistant MDF parts.

ES — Lamas de roble natural europeo y macizado con tablero de MDF-Hidrófugo.

# MDI



MDi - 704

Raw



MDi - 701

Solar



MDi - 702

Eros



MDi - 703

Ghost

## MDI

EN — An innovative surface where design, large format and state-of-the-art materials converge. ES — Innovadora superficie en la que convergen diseño, gran formato y materiales de última generación.

# MATERIALS



Marble Pietra Grey



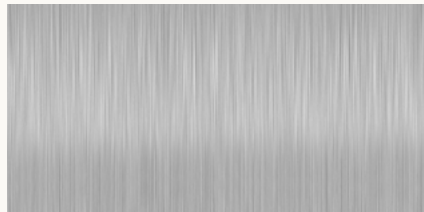
Marble White Carrara



Marble Black Carrara



Metal-GrC Brushed Graphite



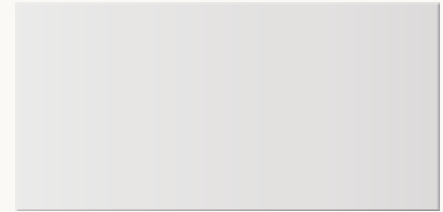
Metal-IC Brushed Inox



Metal-OC Brushed Gold



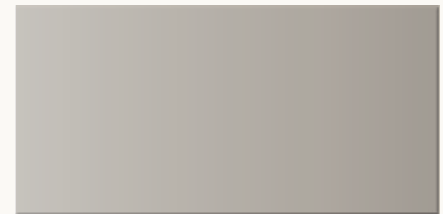
Metal-CrB Glossy Chrome



Glass - Mirror Untinted



Glass - Mirror Grey



Glass - Mirror Bronze

## MARBLE

EN — hand carved products, each having a unique appearance with a variety of veins and colours. ES — Cada tipo de piedra presenta un aspecto diferente debido a las nervaduras y coloración de cada bloque.

## METALLICS

EN — metallics are obtained by using an electrolytic process and a layer by thermo-hardened lacquer. ES — Obtenidos mediante un proceso de deposición electrolítico y una capa de lacado termo-endurecido.

## GLASS & MIRRORS

EN — glass and mirrors are made of glass of thickness 5 or 3 mm and with polished edges. ES — los espejos y cristales están fabricados en cristal de espesor 5 o 3 mm y presentan los cantos pulidos.



COLLECTION IMAGES | CONCEPT AND SET DESIGN

ELISA OSSINO STUDIO

GRAPHIC PROJECT | ART DIRECTION & DESIGN

CHRISTIAN M. ANDERSEN

MARKETING MANAGEMENT

FRAN SERRANO

---

SPECIAL THANKS TO

Jonas Bjerre-Poulsen, Norm Architects, Victor Carrasco, Viccarbe, Yaroslav Priadka,  
Elisa Ossino Studio, Nudesign, Robin Barnes, Decor-Walther, Menu and AllTheWayToParis.

The Beauty  
of Simplicity

MMXXII Collection

INBANI

INBANI 2022 CATALOGUE

HERITAGE

GRATE

STRATO

MDI

PARAL

FORMA

ORIGIN

FACETT

---