



LUXURY CERAMICS
HAND MADE IN THE UK

A TRADITION OF EXCELLENCE



WELCOME TO SILVERDALE BATHROOMS

We are one of the few remaining bathroom manufacturers in the UK today. Our factory is located in the heart of the English Potteries. We know that the quality of our ceramic is the best in the world because our customers tell us so. Our business is also proud to offer complementary products supplied by our partners, who share our values of quality and integrity which allows you to create a complete bathroom with a stamp of excellence.



HAND MADE
IN THE UK

PERSONALISATION

With much of our manufacturing process involving hand crafting, we are able to offer you a wide choice to allow you to match your bathroom pottery to your house – or your own personal vision.

All of our ceramic is available in White, with the option of an Old English White finish for ceramic pieces in a selection of our ranges. We also offer the sanitaryware either with or without our Silverdale™ Logo.

Within our Victorian collection we offer two patterned ceramic finishes, Blue Pattern or Garden.

For more of a personal touch, we can add your own choice of logo fired into our hand crafted sanitary ware. Whether you want to have your family crest fired onto your new basin, or to add the brand name of your luxury hotel or business to your ceramic pieces, our personalised logo service means that you can create a unique bathroom design.



Applying the Silverdale™ logo

A TRADITION OF EXCELLENCE



Our experienced team use hand crafted skills passed down through generations in and around Stoke-On-Trent, the true heart of The Potteries.

Each ceramic piece is moulded, glazed and crafted by hand to the very highest specification. Fine China Clay, sourced in the UK, is taken from the mould and is finished and sprayed by hand before firing. Our products are sprayed with three layers of glaze and fired to temperatures of 1200 degrees to achieve the sparkling glassy finish that characterises Silverdale™.

Each piece is 100% quality checked at every production stage, allowing us to achieve perfection that exceeds industry standards and customer expectations.



Applying glaze



Modelling



A Lifetime of pleasure, guaranteed

Timeless quality deserves a timeless guarantee and that is what Silverdale™ offers for your investment in its sanitaryware.



CONTENTS

LUXURY SUITES

Empire NEW ADDITIONS	9	Brassware	63
Balasani	17	Basin Stands NEW ADDITIONS	73
Loxley	23	Tiles	77
Victorian NEW ADDITIONS	29	Baths	85
Hillingdon	41	Accessories	89
Belgravia	45	Ancillaries	94
Seats NEW ADDITIONS	51	Product Purchasing, Installation & Care Guidelines	96
Furniture NEW ADDITIONS	55		
Ceramic Countertop Bowls	59		



A TRADITION OF EXCELLENCE



EMPIRE

The styling of this suite was inspired by the Empire State Building in New York City, the world's most famous Art Deco building and an icon for architecture and design.

The bold angles of the suite perfectly demonstrate the Art Deco style of the 1920s which still has universal appeal today, explaining why Empire is one of our best sellers.



CLASSIC ART DECO

in honour of a sparkling era

EMPIRE



Empire 920mm Winged Console Basin
920x555x848mm, 1, 2 or 3 tap holes, White
Ceramic legset, standard 780mm White



Empire 920mm Console Basin
920x555x870mm, 1, 2 or 3 tap holes, White
Empire pedestal, White



Empire 450mm Cloakroom Basin
450x380mm, 1 or 2 tap holes, White

Empire range is available in White only.

All the brassware is Berkeley and accessories shown in the Empire section are from the Victorian range. See page 63 for our brassware and see page 89 for our accessories.



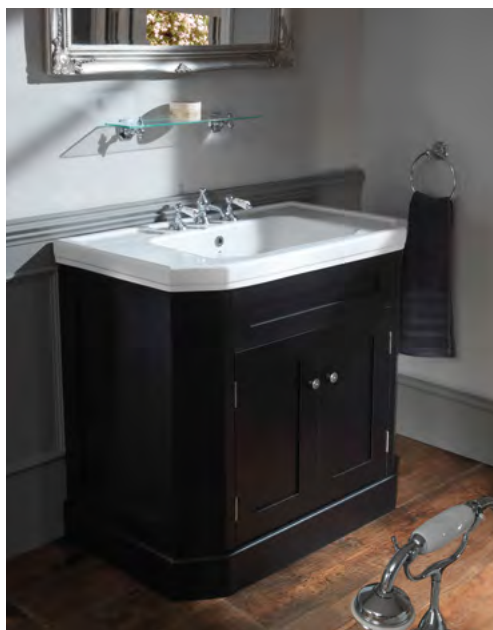
Empire 620mm Basin
620x500x835mm, 1, 2 or 3 tap holes, White
Empire pedestal, White



Empire 700mm Basin
700x530x845mm 1, 2 or 3 tap holes, White
Empire pedestal, White



Empire 530 Vanity Basin
530x425mm 1 or 3 tap holes, White



Empire 920mm Cabinet in Black with 920mm Inset Basin, 1, 2 or 3 tap holes, White with blue logo

Images are for illustration purposes, Empire cabinets have now been amended to the model shown in Grey on page 13.



Empire 700mm Cabinet in Black with 700mm Inset Basin, 1, 2 or 3 tap holes, White with blue logo



Empire 700mm Cabinet in Dark Lead
with 700mm Inset Basin, 1, 2 or 3 tap holes,
White with blue logo



Empire 920mm Cabinet in Dark Lead
with 920mm Inset Basin 1, 2 or 3 tap holes,
White with blue logo

EMPIRE

Empire range is available in White only.



Empire Close-Coupled Pan and Cistern
771x432x795mm, White, Chrome

Polished Nickel version
Incalux version

Shown with Ebony Black seat with
Chrome hinges



Empire Low Level Pan and Cistern
432x715x980mm, White, Chrome pipe
and lever

Polished Nickel version
Incalux version

Shown with Ebony Black seat with
Chrome hinges



Empire Back-to-Wall Pan
530x365x400mm, White

Shown with Ebony Black seat with
Chrome hinges

Please see page 51 for our alternative seat options.

For full technical information on the Empire suite, please visit our website
www.silverdalebathrooms.co.uk



Empire High Level Pan and Cistern
640x505x2419mm (max height), White,
Chrome pipe, brackets and pull

Polished Nickel version
Incalux version

Shown with Ebony Black seat with
Chrome hinges

High level closet cistern includes:
flush pipe, brackets, ceramic disc and ceramic
pull handle with decorative lettering.



Empire Wall Mounted Pan
575x365x400mm, White

Shown with Ebony Black seat with
Chrome hinges



Empire Wall Mounted Bidet
570x360x400mm, 1 tap hole, White



Empire Back-to-Wall Bidet
530x365x400mm, 1 tap hole, White



BALASANI

By taking the period-style splashback, reducing its size whilst preserving the fine edge detail on the basin, a unique suite with a subtle more delicate look has been created.

Based on Edwardian design style with its exquisite finishing and intricate detail, the Balasani suite when teamed with the right brassware, could be perfectly at home in a distinctly non traditional setting. This delicate splashback feature is elegantly repeated on the cistern and bidet to create a collection that is perfectly proportioned and simply stunning.

The 600mm Balasani basin can look equally at home in your ensuite, while the choice of old-world low level, modern wall mounted or Close-Coupled cistern arrangement is another example of this suite's ability to span different eras of home design.



EXQUISITE FINISHING

BALASANI



Balasani 600 Rose Unit with
basin 2 or 3 tap holes

All the accessories and brassware shown in the
Balasani section are from our Victorian or Berkeley
ranges. See page 63 for our brassware and see
page 89 for our accessories.



combining elegance and versatility



Balasani 700mm Dark Lead Cabinet with worktop and 520mm basin 2 or 3 tap holes



Balasani 600mm Basin
600x490x895mm, 2 or 3 tap holes, White
Balasani pedestal, White

Available in White as standard.
Old English White made to order.



Balasani 600mm Basin
600x490x870mm, 2 or 3 tap holes, White
Balasani traditional basin stand Chrome
830mm high

The stand is also available in
Polished Nickel
Incalux



Balasani Inset Vanity Basin
520x430mm, 2 or 3 tap holes, White

Also available with cabinet and worktop.
See page 19.

Cabinets can be made to order in additional colours.
See page 59.

For full technical information on the Balasani suite, please visit our website
www.silverdalebathrooms.co.uk

BALASANI

High level closet cistern includes:
flush pipe, brackets, ceramic disc and ceramic
pull handle with decorative lettering.



Balasani Close-Coupled Pan and Cistern
430x704x820mm, White, Chrome

Polished Nickel version
Incalux version

Shown with Dark Oak seat with Chrome hinges



Balasani Low Level Pan and Cistern
430x730x1010mm, White, Chrome pipe

Polished Nickel version
Incalux version

Shown with Light Oak seat with Chrome hinges



Balasani High Level Pan and Cistern
430x605x2390mm (max height), White,
Chrome pipe, brackets and pull

Polished Nickel version
Incalux version

Shown here with Light Oak seat with
Chrome hinges

Please see page 51 for our alternative seat options.



Balasani Wall Mounted Pan
365x575x400mm, White

Shown here with a Dark Oak seat with
Chrome hinges



Balasani Wall Mounted Bidet
360x570x400mm, 1 tap hole, White



Balasani Back-to-Wall Bidet
360x570x455mm, 1 tap hole, White



For full technical information on the Balasani suite, please visit our website
www.silverdalebathrooms.co.uk



LOXLEY

A fine blend of solidity and curves, the Loxley suite uses finely sculptured contours to create a look that will not be forgotten.

Its double roll rim is available in both the standard and classic basin options to give a choice for your bathrooms style. This feature is mirrored across the comprehensive range of WCs.



SCULPTURED CONTOURS

fine blend of curves

LOXLEY



Loxley 650mm Basin on Pedestal
655x560x845mm, 1 or 3 tap holes, White
Loxley pedestal, White



Loxley 650mm Basin with Stand
655x560x850mm, 1 or 3 tap holes, White
Stand Chrome only



Loxley 860mm Basin with Legs
860x600x860mm, 1 or 3 tap holes, White
Legs

Available in White only.

Tiles featured:
Carlton Oyster - wall / Merrick Brown - floor. See page 77 for tile collection.

For full technical information on the Loxley suite, please visit our website
www.silverdalebathrooms.co.uk

Featured brassware is Berkeley.
See page 63 for full brassware ranges.



Loxley 860mm Basin with Stand
860x600x850mm, 1 or 3 tap holes, White
Stand Chrome only



Loxley Classic 860mm Basin with Stand
860x600x925mm, 1 or 3 tap holes, White
Stand Chrome only



Loxley Classic 860mm Basin with Legs
860x600x935mm, 1 or 3 tap holes, White
Legs

LOXLEY

Loxley range is available in White only.



Loxley Classic 650mm Basin with Stand
655x560x935mm, 1 or 3 tap holes, White
Stand Chrome only



Loxley Classic 650mm Basin on Pedestal
655x560x905mm, 1 or 3 tap holes, White
Loxley pedestal, White



Loxley 450mm Cloakroom Basin
450x390mm, 1 tap hole, White

For full technical information on the Loxley suite, please visit our website
www.silverdalebathrooms.co.uk

High level closet cistern includes:
flush pipe, brackets, ceramic disc and ceramic pull
handle with decorative lettering.



Loxley Close-Coupled Pan and Cistern
730x450x820mm, White, Chrome

Polished Nickel version
Incalux version

Shown with Dark Oak seat with
Chrome hinges



Loxley Low Level Pan and Cistern
750x450x1003mm, Chrome pipe and lever

Polished Nickel version
Incalux version

Shown with Dark Oak seat with
Chrome hinges



Loxley High Level Pan and Cistern
665x450x2005mm (max height), White,
Chrome pipe, brackets and pull

Polished Nickel version
Incalux version

Shown with Dark Oak solid wood seat with
Chrome hinges

Please see page 51 for our alternative seat options.



VICTORIAN

For many people, the very epitome of the traditional bathroom look has to be Victorian.

A celebration of confident square forms with distinctive high splashbacks, the basin, closet and cistern in this suite are based on authentic original pieces re-created in all their gleaming glory by Silverdale's craftsmen.

The beauty of the Victorian look is in the strong detailing, from the options of a high level cistern to elegant basin stands.

A further, more modern refinement, is a compact version of the Victorian basin to create an extra sense of space in your cloakroom or ensuite.



CELEBRATING A GRANDER AGE

beautifully traditional

VICTORIAN

Fluted



585mm

Unfluted



585mm

Fluted and unfluted,
standard pedestal

Victorian Standard Pedestal 585mm,
fluted or unfluted



Victorian 635mm Basin
635x485x910mm, 2 or 3 tap holes, White
Fluted pedestal standard height 585mm, White
Also available with unfluted pedestal

Available in White as standard.
Old English White made to order.



Victorian 635mm Basin with Stand
635x485x930mm, 2 or 3 tap holes, White
Victorian basin stand, Chrome
Incalux or Nickel version



Victorian Corner Basin
465x465mm, 1 or 2 tap holes, White

All the accessories and brassware in this section are from the Victorian range.
See page 63 for our brassware and see page 89 for our accessories.



Victorian Cloakroom Basin
530x385mm, 2 tap holes, White
Victorian Cloakroom Basin Stand, Chrome
Incalux or Nickel version

Also available as wall mounted.



Victorian Inset Vanity Basin
510x385mm, 0 tap holes, White



Victorian Micro Basin
400x215mm, 1 or 2 tap holes, White



Victorian 440mm Undermount Basin
440x305x210mm, 0 tap holes, White

Also available
Victorian 480mm Undermount Basin
480x382x191, 0 tap holes, White

For full technical information on the Victorian suite, please visit
our website www.silverdalebathrooms.co.uk



Victorian 1400mm Dark Lead Cabinet with 440mm
Undermount Basins and solid surface 3th worktop

Other colours available. Made to order.
For colours see page 59.



Victorian French Dark Grey Micro Cabinet
with Square Micro Basin, 1 or 2 taphole



Victorian French Dark Grey Back to Wall Unit
including Victorian BTW Pan & Concealed Cistern



Other colours available. Made to order.
For colours see page 59.



Victorian 750mm French Dark Grey Cabinet with 440mm undermount basin & Solid Surface 3th worktop



Victorian 635mm Normandy Grey Cabinet with 635mm Basin, 2 or 3 tap holes



Victorian 670mm Dark Lead Cabinet with square cabinet basin, 1 or 3 tap holes

Victorian Square Cabinet Basin only, 1 or 2 tap holes

VICTORIAN

High level closet cistern includes:
flush pipe, brackets, ceramic disc and ceramic
pull handle with decorative lettering.



Victorian Close-Coupled Pan and Cistern
430x740x790mm, White, Chrome

Polished Nickel version
Incalux version

Shown with Light Oak seat
with Chrome hinges



Victorian Low Level Pan and Cistern
430x740x1010mm, White, Polished Nickel pipe,
and lever

Chrome version
Incalux version

Shown with Light Oak seat with
Polished Nickel hinges



Victorian High Level Pan and Cistern
440x670x2005mm (max height), Old English White,
Incalux pipe, brackets and pull

Chrome version
Polished Nickel version

Shown with Dark Oak seat with Incalux hinges

Please see page 51 for our alternative seat options.



Victorian Wall Mounted Pan
330x575mm, White

Shown with Light Oak seat with Chrome hinges



Victorian Wall Mounted Bidet
360x570mm, 1 tap hole, White



Victorian Freestanding Bidet
360x570mm, 1 tap hole, White



Victorian Back to Wall Pan
365x535x405mm

For full technical information on the Victorian suite, please visit our website
www.silverdalebathrooms.co.uk

The Victorian Suite is also available in a choice of Victorian Garden or Victorian Blue Garden patterns decorated on White ceramic.

These traditional styles are fired into the glaze and provide a stunning alternative in this the most authentic style of the Victorian era. Both patterns are made to order.



VICTORIAN GARDEN



Classic White (Brown logo, Victorian Garden Pattern) basin and pedestal



Victorian Garden Basin
2 or 3 tap holes, 635x485x910mm
Victorian Garden decoration
Victorian standard unfluted pedestal,
Victorian Garden decoration
Also available with fluted pedestal



Victorian Garden Low Level Pan and Cistern
360x740x1010mm, Victorian Garden
decoration, Incalux pipe, lever
Shown with Dark Oak seat with Incalux hinges

Chrome version
Nickel version

Victorian Garden & Blue Pattern ranges are also available in a High Level WC version.

Chrome
Incalux
Nickel



Victorian Garden Cloakroom Basin
530x385mm, 2 tap holes,
Victorian Garden decoration

Also available in both Victorian and Blue Garden patterns:
Corner basin 465x465mm, 1 or 2 tap holes
Inset Vanity basin 510x385mm, 0 tap holes

VICTORIAN BLUE GARDEN



Victorian Blue Garden Freestanding Bidet
360x570mm, 1 tap hole,
Blue Garden decoration
Also available in Victorian Garden



Victorian Blue Garden Close-Coupled Pan
and Cistern 430x740x790mm, with Chrome fittings
Blue Garden decoration
Also available in Victorian Garden
Shown with Light Oak seat with Chrome hinges

Incalux version
Nickel version

Also available in low level and high level prices
on previous page.

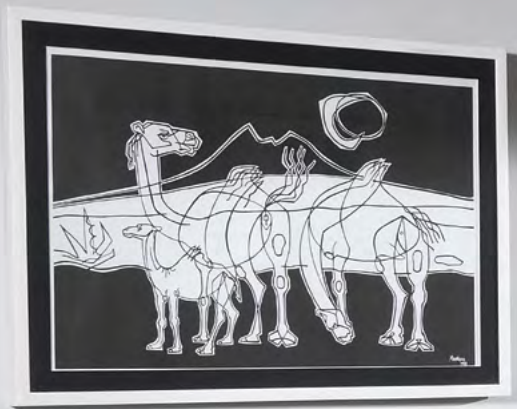
For full technical information on
the Victorian Garden suite, please
visit our website
www.silverdalebathrooms.co.uk



Victorian Basin in Blue Garden
635x485x910mm, 2 or 3 tap holes,
Blue Garden Decoration
Victorian standard unfluted pedestal,
Blue Garden decoration



Pedestal also available fluted.



HILLINGDON

Reassuringly solid, yet stylish and elegant, the double roll rim and soft edges of the Hillingdon suite will add a period feel to any bathroom.

With dual top flush, Close-Coupled closet, cistern, freestanding/ back-to-wall bidet and back-to-wall closet, the Hillingdon suite has all the practical features of a contemporary bathroom suite.

A choice of cloakroom and semi-countertop basins, full and semi-pedestals provide the flexibility to suit any bathroom size.



STYLISHLY ELEGANT

suave contours

HILLINGDON



Hillingdon 650mm Basin
650x550x820mm, 1 or 3 tap holes, White
Hillingdon pedestal, White



Hillingdon 650mm Basin
650x550x470mm, 1 or 3 tap holes, White
Hillingdon semi-pedestal, White



Hillingdon 450mm Cloakroom Basin
450x390mm, 1 tap hole, White

Available in White only.

Tiles featured:
Cranbourne Grey - wall / Chilton - floor
See page 77 for tile collection.



Hillingdon 600mm Semi-Countertop Basin
600x490mm, 1 or 3 tap holes, White

Hillingdon Back-to-Wall Pan
380x550x405mm, White

Hillingdon soft close seat, White,
anti-bacterial coating

Please note the cabinet shown above has
been supplied by Utopia Bathrooms and is
from their Roseberry Collection.



Hillingdon Close-Coupled Pan and Cistern
425x720x845mm, White

Hillingdon soft close seat, White,
anti-bacterial coating



Hillingdon Back-to-Wall Bidet
370x585x405mm, 1 tap hole, White

For full technical information on the Hillingdon suite, please visit our website
www.silverdalebathrooms.co.uk



BELGRAVIA

Echoing the wood panelling, the fluted feature on Belgravia coupled with its beautiful curved basin front has always been one of the essential defining features of period styling.

The look is full of character and wonderfully evocative, used here to subtle effect on Belgravia's pedestal, closet and bidet. The cistern breakfront shape is another charming traditional detail.

Belgravia combines elegance with exceptional versatility.

The choice of cistern arrangements allows you to indulge your period bathroom styling ideas as far as you like, while giving you the option of repeating the same look in your cloakroom or ensuite.



PERIOD DETAILING

exudes classical character

BELGRAVIA

Fluted



585mm

Unfluted



585mm

Fluted and unfluted,
standard pedestal

Belgravia Standard Pedestal
585mm, fluted or plain



Belgravia 635mm Basin
635x490x910mm, 2 or 3 tap holes, White
Fluted standard pedestal

Available in White as standard.
Old English White made to order.





Belgravia Coquet Inset Basin
565x460x195mm, 2 or 3 tap holes, White



Belgravia 530mm Cloakroom Basin
530x385mm, 2 tap holes, White

A basin stand is also available for this basin.
See page 73.

For full technical information on the Belgravia suite, please visit our website
www.silverdalebathrooms.co.uk





Belgravia Close-Coupled Pan and Cistern
365x740x790mm, White, Chrome

Polished Nickel version
Incalux version

Shown with Light Oak seat with Chrome hinges
Seats also available with Incalux or
Polished Nickel hinges



Belgravia Low Level Pan and Cistern
430x740x1010mm, White, Chrome pipe,
and lever

Polished Nickel version
Incalux version

Shown with Light Oak seat with Chrome hinges

Please see page 51 for our alternative seat options.



High level closet cistern includes:
flush pipe, brackets, ceramic disc and ceramic
pull handle with decorative lettering.

Belgravia High Level Pan and Cistern
440x670x2005mm (max height), Old English White,
Chrome pipe, brackets and pull

Polished Nickel version
Incalux version
Shown with Light Oak seat with Chrome hinges



Belgravia Floor Mounted Bidet
330x535x375mm, 1 tap hole, White



Belgravia Wall Mounted Pan
330x575mm, White

Shown with Dark Oak seat with Chrome hinges



Belgravia Wall Mounted Bidet
360x570mm, 1 tap hole, White

For full technical information on the Belgravia suite, please visit our website
www.silverdalebathrooms.co.uk



SEATS

We take a great deal of time creating a toilet seat to match each WC Pan, whether in quality of the materials, subtleties of design and, in the case of the White acrylic seats, colour matching to our ceramic.



PERFECTLY MATCHED

WC SEATS WOODEN SEATS

Our luxury wooden seats are available in Light Oak, Dark Oak, Mahogany, Black, Dark Lead and French Grey finishes for the Victorian, Belgravia, Balasani, Empire, Nouveau and Loxley suites.

All of these seats are available with either Chrome, Incalux or Nickel hinges with either a standard or soft close operation.

Images are for colour illustration purposes only. The design of all seats are as the Dark Lead model.



Dark Lead



Light Oak



Dark Oak



Ebony Black



Mahogany



French Dark Grey

HINGES

The heavyweight hinges are plated to the highest standard with the finishing touch of a Silverdale™ branded plaque fixed into the lid.



Standard Hinge



Soft Close Hinge



Chrome



Polished Nickel



Incalux

WHITE ACRYLIC SEATS

All of our acrylic soft closing seats are supplied with a quick release hinge.

**The Traditional Acrylic soft close seat is suitable for Closed Coupled, Back-to-Wall and Wall Mounted models on Victorian, Belgravia, Balasani, Empire and Nouveau suites. Please note that this seat is not compatible with the Loxley range of WC's or any low/high level WC.



White Soft Close Acrylic Seat

PRICES

Standard Wooden Chrome
 Standard Wooden Incalux
 Standard Wooden Nickel
 Soft Close Wooden Chrome
 Soft Close Wooden Incalux
 Soft Close Wooden Nickel
 Hillingdon Soft Close Seat
 Traditional Acrylic Soft Close Seat **



FURNITURE

Adding furniture to your bathroom offers practical use of space for storage whilst adding character to your bathroom. Our furniture is designed to complement our sanitaryware which is specially manufactured to obtain an optimum fit.



TRANSFORM YOUR BATHROOM

FURNITURE

Stocked Cabinet Colours:

Victorian 635mm Cabinet;
Normandy Grey.

Victorian BTW Cabinet, Micro Cabinet;
French Dark Grey.

Victorian 670mm Cabinet; Dark Lead.

Victorian 1400mm Cabinet not stocked
but standard colour Dark Lead.

Victorian 750mm Cabinet not stocked
but standard colour French Dark Grey.

Other colours maybe ordered for all
sizes see page 59

VICTORIAN



Victorian Dark Lead 1400mm Cabinet with 440mm
Undermount Basin and solid surface 3th worktop



Victorian Micro French Dark Grey Unit with
1 or 2 tap hole basin



Victorian French Dark Grey 750mm unit & solid surface
worktop with undermount basin, drilled 3 tap hole



Silverdale Back to Wall Victorian Pan
with Concealed Cistern French Dark Grey
(Also available with Empire BTW pan)

FURNITURE



Victorian 670mm Unit Dark Lead with
sit on basin 1 or 3 tap hole



Victorian 635mm painted cabinet, Normandy
Grey with basin 1, 2 or 3 tap hole



Silverdale 670mm Unit Dark Lead with 600mm Sit on Basin
600mm Countertop Basin only



Also available with 370mm and 550mm basin
370mm basin only
550mm basin only

COLOURS AVAILABLE

Basalt	Lead Colour
Black/Ember	Azure
Blue Gum	Blush
Cordoba	Normandy Grey
Dark Lead	Oval Room Blue
French Grey	Sand
French Grey Dark	Ink
Slate	White
Joanna	Yellow-Pink
Juniper Ash	Victorian Rose

FURNITURE

Stocked Cabinet Colours:

Balasani 600; Rose
Balasani 700; Dark Lead

Empire 700mm; Dark Lead
or Black

Empire 920mm; Dark Lead
or Black

Other colours maybe ordered
for all sizes see page 59 £POA.

BALASANI



Balasani 700mm Dark Lead Cabinet with
worktop and 520mm basin 2 or 3 tap holes



Balasani 600mm Rose Unit with
basin 2 or 3 tap holes

EMPIRE



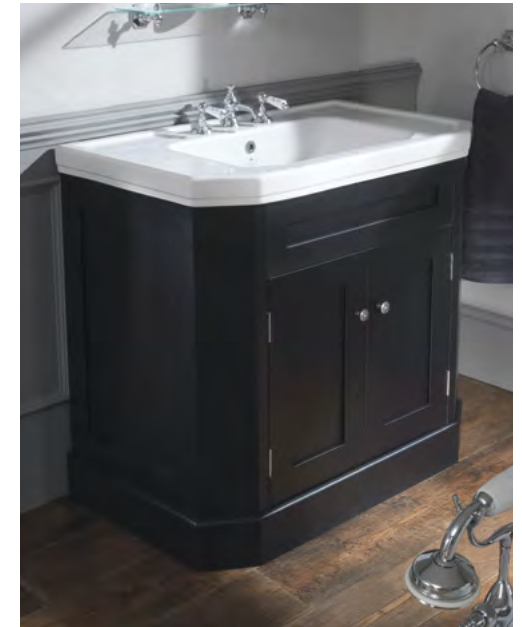
Empire Dark Lead 700mm Cabinet with Basin
1, 2 or 3 tap holes



Empire Dark Lead 920mm Cabinet with Basin
1, 2 or 3 tap holes



Empire Black 700mm Cabinet with Basin
1, 2 or 3 tap holes



Empire Black 920mm Cabinet with Basin
1, 2 or 3 tap holes

Empire images are for illustration purposes,
Empire cabinets have now been amended to
the Dark Lead model.



SILVERDALE
GREAT BRITAIN

BRASSWARE

Silverdale Bathrooms offers two comprehensive tap collections and two showering solutions to allow you to add the all-important finishing touches to your bathroom.

Our brassware will operate on either low or high pressure systems and is available in Chrome, Incalux and Polished Nickel for Victorian and Chrome for Berkeley.



GLEAMING TOUCHES

BRASSWARE

VICTORIAN

All available in the following finishes:

Chrome



Incalux



Polished Nickel



Victorian Basin Pillar Taps (excluding waste)

Chrome
Incalux
Polished Nickel



Victorian Bidet Monobloc Mixer with pop up waste

Chrome
Incalux
Polished Nickel



Victorian Cloakroom Basin Pillar Taps

Chrome
Incalux
Polished Nickel



Victorian Bath Pillar Taps (excluding waste)

Chrome
Incalux
Polished Nickel



Victorian Basin Monobloc Mixer with pop up waste

Chrome
Incalux
Polished Nickel



Victorian Bath Shower Mixer (excluding waste)

Chrome
Incalux
Polished Nickel



Victorian 3 Tap Hole Basin Mixer
with pop up waste

Chrome
Incalux
Polished Nickel



Chrome



Incalux

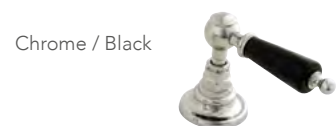


Polished
Nickel

BRASSWARE

BERKELEY

Available in Chrome only.



Berkeley Bath Pillar Taps (excluding waste)

Chrome / White
All Chrome
Chrome / Black



Berkeley Basin Pillar Taps (excluding waste)

Chrome / White
All Chrome
Chrome / Black



Berkeley Basin Monobloc Mixer
with pop up waste

Chrome / White
All Chrome
Chrome / Black



Berkeley Bidet Monobloc Mixer
with pop up waste

Chrome / White
All Chrome
Chrome / Black



BRASSWARE

BERKELEY



Berkeley 3 Tap Hole Basin Mixer
with pop up waste

Chrome / White
All Chrome
Chrome / Black



Chrome / White



All Chrome



Chrome / Black



Berkeley Bath Shower Mixer

Chrome
All Chrome
Chrome / Black



Chrome / Black



Chrome / White



All Chrome

BRASSWARE



SILVERDALE CONCEALED SHOWER SET

- 1) Sliding Rail complete with hose, handset and wall outlet
- 2) Shower Arm 300mm.
- 3) Shower Head dia. 150mm
- 4) Concealed thermostatic shower valve with two way diverter.

Chrome
Incalux
Polished Nickel



SILVERDALE EXPOSED SHOWER SET

- 1) Sliding Rail complete with hose, handset and wall outlet
- 2) Shower Arm 300mm.
- 3) Shower Head dia. 150mm
- 4) Exposed thermostatic shower valve with Victorian lever and handle.

Chrome
Incalux
Polished Nickel





BASIN STANDS

Designed specifically for use with the Victorian, Balasani and Loxley basins. Silverdale's stands are the finest quality available, each one finished by hand.



FINISHED BY HAND

BASIN STANDS



Victorian Cloakroom Basin Stand, Chrome
For use with Cloakroom Basin
530x385mm, 2 tap holes, see page 31.

Polished Nickel
Incalux



Victorian Stand, Chrome
For use with the Victorian 635mm Basin
635x485x930mm, 2 or 3 tap holes, see page 30.

Polished Nickel
Incalux



Balasani Stand, Chrome
For use with the Balasani 600mm Basin
600x490x870mm, 2 or 3 tap holes, see page 19.

Polished Nickel
Incalux



Loxley 860mm Stand, Chrome
For use with either Loxley 860mm Basin
860x600x850mm or Loxley Classic Basin
860x600x925mm 1 or 3 tap holes, see pages 24-26.



Loxley 650mm Stand, Chrome
For use with either Loxley 650mm Basin
655x560x850mm or Loxley 650mm Classic Basin
655x560x935mm 1 or 3 tap holes, see pages 24-26.



72 GARDEN PROVINCE
13-582
PRINCE EDWARD ISLAND

GARRISON
HAND SOAP
05
VERBENA

UN-HOME
HAND SOAP
VERBENA

TILE COLLECTION

We have specially selected a range of ceramic tiles to complement our sanitary ware and finish your bathroom to the standard we feel you desire. Our tiles are available in a range of finishes, colours and styles.



PERFECTLY MATCHED

TILES

Please visit our website
www.silverdalebathrooms.co.uk
to see additional information and
guidance with fitting of tiles.

CRANBOURNE WALL TILES

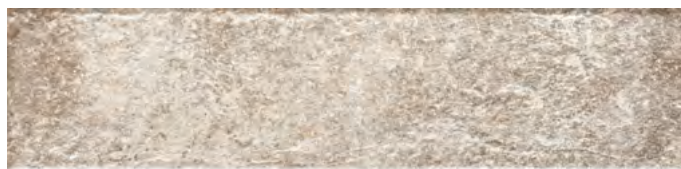
300mm x 75mm tile



Grey



Red



Sand

Walls – Grey Cranbourne



CARLTON WALL TILES

Crackle effect 150mm x 75mm tile

Sealant is required
prior to grouting.



Beige



Oyster



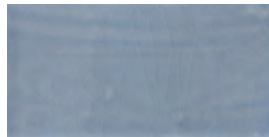
Pearl



White



Teal



Blue



Green

Walls – Oyster



TILES

Please visit our website
www.silverdalebathrooms.co.uk
to see additional information and
guidance with fitting of tiles.

HADDINGTON WALL TILES

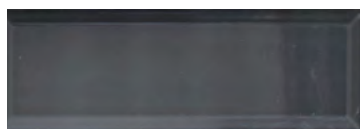
300mm x 100mm tile



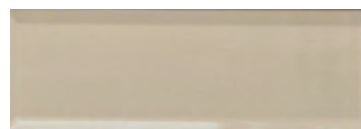
White



Cream



Graphite



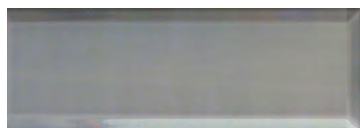
Olive



Light Grey



Almond



Dark Grey

Walls – White Haddington



CHILTON FLOOR TILES

450mm x 450mm tile



WINSTER FLOOR TILES

305mm x 305mm tile

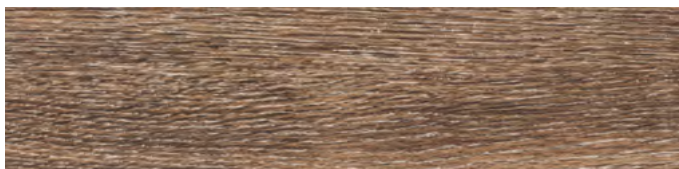


TILES

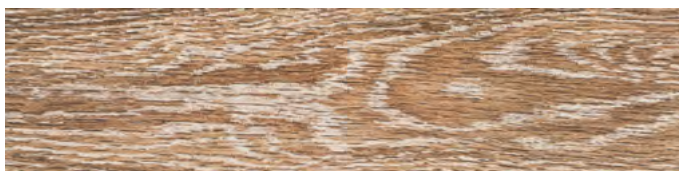
Please visit our website
www.silverdalebathrooms.co.uk
to see additional information and
guidance with fitting of tiles.

FAIRFIELD FLOOR TILES

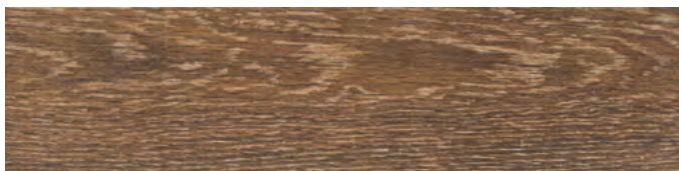
300mm x 74mm tile



Brown



Honey



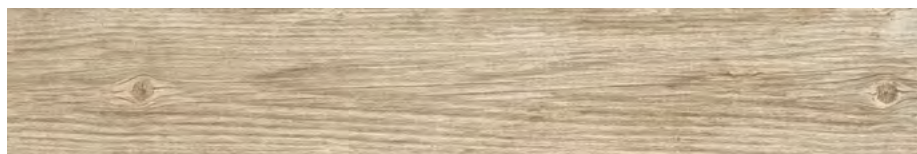
Nugat

Floor – Nugat Fairfield



MERRICK FLOOR TILES

985mm x 215mm tile



Beige



Brown



Grey

Floor – Brown Merrick





BATHS

If you are wanting to create a dramatic focal point for your bathroom, you cannot go wrong with an iconic cast iron bath.

Our baths include cast iron White or Chrome claw feet and are available with or without tap holes. The outside of the baths are primed ready for overpainting in your chosen colour scheme.



DRAMATIC AND ICONIC

GINEVRA 1700
SLIPPER BATH ON CHROME
FEET OR PRIMED FEET

1700x770x770mm
2 tap holes, Chrome
or White feet

Weight: 120Kg
Capacity: 170 Litres





ROSAMUND DUAL ROLL TOP
BATH ON CHROME FEET
OR PRIMED

1700x770x600mm
2 tap holes, Chrome
or White feet

Weight: 135Kg
Capacity: 200 Litres



ACCESSORIES

Whatever your chosen bathroom scheme, our accessories collection will help you add the all-important quality details – the magnificent, gleaming finishing touches for your chosen bathroom look.

All of our luxury accessories are manufactured the heart of the UK using the finest, hand polished, quality brass.



PRACTICAL FINISHES

VICTORIAN

No bathroom is ever complete without those little finishing touches.

The Victorian accessories are both practical and stylish adding that charming, period detailing to tie in with your chosen suite.

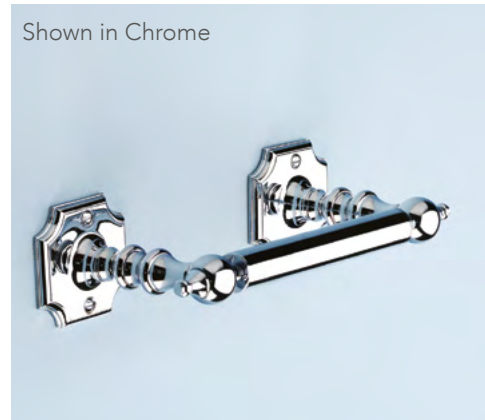
Available in Chrome, Incalux or Polished Nickel finishes.

Shown in Polished Nickel



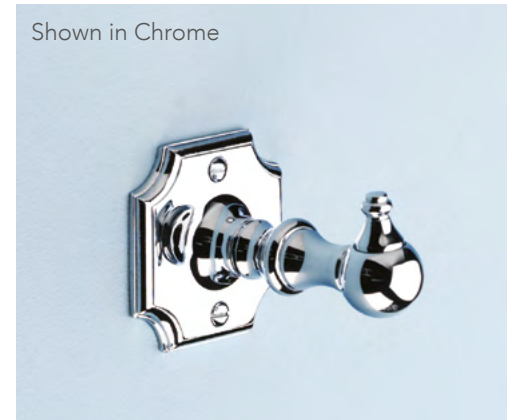
Towel ring
Chrome or Polished Nickel
Incalux

Shown in Chrome



Toilet roll holder
Chrome or Polished Nickel
Incalux

Shown in Chrome



Robe hook
Chrome or Polished Nickel
Incalux

Shown in Chrome



Toothbrush holder
Chrome or Polished Nickel
Incalux

Shown in Chrome



Crystal soap dish
Chrome or Polished Nickel
Incalux

Shown in Polished Nickel



Tumbler holder and crystal glass tumbler
Chrome or Polished Nickel
Incalux

VICTORIAN

Shown in Chrome



495mm Glass shelf
Chrome or Polished Nickel
Incalux

Shown in Chrome



810mm Single towel rail
Chrome or Polished Nickel
Incalux

BERKELEY

Berkeley accessories offer a slightly softer and more classically styled options with its round, less intricate mounting platform.

Available in Chrome only.

All shown in Chrome



Towel ring



Toilet roll holder



Robe hook



Toothbrush holder



Crystal soap dish



Tumbler holder and crystal glass tumbler

BERKELEY

Shown in Chrome



495mm Glass shelf

Shown in Chrome



810mm Single towel rail

Your Silverdale™ basin will need a suitable plug and waste and if wall mounted without a pedestal or fitted on a basin stand, a bottle trap. We offer a comprehensive range of premium quality Chrome, Incalux or Polished Nickel plugs and chains, pop up or clicker wastes for all our products whether traditional or contemporary in style.

WASTES



Universal Basin Waste plug & chain
Chrome
Polished Nickel
Incalux



Universal Basin Waste plug, chain & stopper
Chrome
Polished Nickel
Incalux



Universal Basin pop up waste
Chrome
Polished Nickel
Incalux

BASIN WASTE OPTIONS

The most popular wastes to consider are either a standard plug and chain, clicker waste or pop up waste.



Universal Basin Clicker waste
Chrome
Polished Nickel
Incalux



Universal Bottle Trap
Chrome
Polished Nickel
Incalux



Contemporary
Basin bottle trap,
Chrome

FREESTANDING BATH WASTES



Universal Exposed Waste &
Overflow for Freestanding bath
Chrome
Polished Nickel
Incalux

Universal Bath Trap for Freestanding bath
Chrome
Polished Nickel
Incalux



Telescopic Shrouds (covers only, not water carrying)
Chrome
Polished Nickel
Incalux

CERAMIC PAN CONNECTORS

Ceramic Pan Connector Collar
Ceramic Straight P Trap Connector
Ceramic S Trap Connector

PRODUCT PURCHASING, INSTALLATION & CARE GUIDELINES

PURCHASING A SILVERDALE PRODUCT

We strongly recommend purchasing your new bathroom using the advice of a bathroom specialist. Bathroom retailers generally have in-house designers as well as experienced staff who understand the potential technical pit falls around fitting and commissioning a new bathroom. They will often be able to recommend good, qualified fitters also. We also strongly recommend that prior to purchasing our products, you seek professional advice regarding the products compatibility with your existing water supply and waste connections. Please call the office for a list of the retailers that we work with.

INSTALLATION OF A SILVERDALE PRODUCT

Prior to installation all products should be carefully inspected for any faults. If dimensions are critical to the project, items should be physically checked in the space or against any additional products before proceeding.

Despite our high quality manufacturing standards our sanitaryware is subject to dimensional variations due to the ceramic manufacturing process. All sizes quoted in our brochure and on our website are nominal and may vary +/- 2%.

Products must be installed in accordance with fitting guidelines, current UK Water Regulations and recognised installation practices.

CARE GUIDELINES OF A SILVERDALE PRODUCT

Appropriate cleaning guidelines are stated in this brochure and also on the website. These must be adhered to. Failure to do so may invalidate product guarantees.

GUARANTEES

We are immensely proud of the product that we manufacture at Silverdale. It is manufactured by hand and checked at all stages to ensure that the quality passes our exacting standards and that it reaches you in perfect condition.

All products received should be thoroughly checked for any possible damage that may have occurred during transit.

If you believe that damage has occurred you should report this to the retailer from where you originally purchased the goods within 24 hours of receipt of the delivery.

We are confident that it will give you many years of pleasure and service. However in the unlikely event that you experience any manufacturing defect or a claim under the guarantee, confirmed by Silverdale, we will offer to replace the item free of charge. If the exact product is no longer available then an equivalent product will be issued. Any manufacturing defect on the product should be reported at point of receipt and not after the product has been fitted. Silverdale cannot accept liability of any defect that was evident before the installation process or that may have occurred during the fitting.

Our warranty is in addition to your consumer statutory rights and does not affect those in any way. It is important to follow our fitting instructions during the installation process and to use the care instructions outlined. Failure to do so may result in a void warranty claim.

Any claim under the guarantee must be first reported to the retailer where you purchased the goods from and must be accompanied with the original proof of purchase. We reserve the right to request supporting

photographic evidence and the opportunity to inspect the product as installed. Any broken product removed from its installation should be stored for inspection by our staff.

The guarantee covers product supplied for installation into domestic premises in the UK and Ireland only. It may be transferred to a subsequent purchaser of the premises in which the product is initially installed however it will not apply if the product is re-installed elsewhere.

Commercial applications- a 12 month guarantee applies to all products with the exception of sanitaryware which still comes with a lifetime guarantee against manufacturing defects.

This guarantee does not extend to any item rendered defective by faulty installation, where modifications have been made, inappropriate use and accidental or malicious damage after purchase, nor does it cover general wear and tear.

Liability is limited to the product supplied and does not cover associated installation costs, consequential loss or damage claims.

TERMS & CONDITIONS OF SALE

All prices quoted in this brochure are inclusive of 20% VAT, in the event of a change to the current rate our pricing will change accordingly.

It is necessary from time to time to review our pricing structure, we therefore reserve the right where necessary to amend our retail prices.

Your terms and conditions of sale are with the retailer from whom you purchased your products.

SANITARYWARE

Our ceramic products have a lifetime guarantee against manufacturing defects. Sizes supplied are guaranteed to a 2% dimensional tolerance. Vitreous China is hard wearing but brittle. It should not be put under any stress during the installation of brassware and wastes. Overtightened fittings can cause a failure on installation or after a period of time has elapsed. Where handcrafted sanitaryware meets a machined surface such as bathroom furniture or work surfaces a bead of silicone will be required to conceal small gaps between the two items.

Ceramic glazed finishes do require regular cleaning to prevent build up of lime scale and water deposits. This should be done using only clean warm soapy water and a small amount of non-abrasive cream cleaner using a soft cloth. Do not use any abrasive cleaners and ensure the surfaces are rinsed thoroughly with clean water after the cleaning process.

CISTERN INTERNALS

Cistern internals are supplied with a guarantee period of 2 years from the date of purchase against manufacturing defects. All Silverdale cisterns are designed and tested to flush correctly at six litres in accordance to European Standards. Cisterns are supplied with the appropriate flushing valves, levers and pipes to ensure this and we cannot accept responsibility where fittings have been incorrectly installed or substituted.

CAST IRON BATHS

Cast iron baths carry a 20 year guarantee against manufacturing defects from the date of purchase. The manufacture of cast iron baths is a highly industrial and difficult process of fusing enamel onto red hot cast iron. As such it may produce slight ripples, dimples and black specks on the internal surface of the bath. These are entirely normal and will not affect the performance

of the bath or its longevity. With minimum care and attention, your bath will give you many years of luxurious enjoyment. To keep your bath looking good, rinse it thoroughly after use and dry using a soft cloth as any accumulation of limescale and soap scum can have an adverse effect on the enamel surface. Dripping taps should be avoided, and clean the surface regularly with a soft cloth and a non-abrasive, non-acidic cleaner.

TOILET SEATS

From the date of purchase a two year guarantee period is offered against manufacturing defects on all of our toilet seats and their related components. Do not use abrasive cleaning products or any products that contain chlorine, alcohol or acids as these may cause yellow staining and or peeling of the toilet seat material. Once you have cleaned the seat with warm soapy water and a soft cloth, please ensure that the seat is wiped down with a damp clean cloth. We advise to leave the seat lid up whenever any strong products have been used to clean the WC and may be left in the bowl of the pan to ensure that the vapours do not damage the seat. As wood is a natural material it is subject to colour and grain variations from product to product. The colour of natural wood will also mature and therefore change over time.

BASIN STANDS & ACCESSORIES

The hand produced method of manufacture may result in slight surface detail imperfections. We do however guarantee them against manufacturing defect for 2 years from date of purchase. All surfaces that are Chrome, gold or nickel plated should be subject to regular cleaning using a soft cloth and mild soapy water. You will need to ensure that the stand is wiped clean with water and then dried with a soft cloth. Do not use abrasive cleaners, pads or harsh cleaning agents containing alcohol, bleach, acids, vinegar, ammonia or antibacterial ingredients. As gold is a soft metal please note that it can be easily damaged

by cleaning products and be depleted by excessive rubbing, even with a soft cloth. Nickel is classed as a 'Living Finish' therefore will have no protective coating and form a natural patina that will age naturally. The surface patina will darken in areas that are infrequently handled or in contact with towels and appear highlighted in those that are frequently handled or in contact with towels.

TILES

Our tiles have been manufactured from the finest ceramic materials. Slight shade variation is an inherent feature of ceramic tiles and adds to their beauty. Before fixing tiles it is important to take them from different boxes and lay them out to ensure shade differences are evenly distributed.

If excessive shade variation is present, tiles must be returned prior to fixing. No claims for variation of shade can be accepted after they have been fixed. No guarantee is given against variation in shade, pattern of different batches and against crazing. The surface of crackle tiles is manufactured to give a crazed/crackle look synonymous with tiles manufactured from the early 20th century.

We recommend that these tiles are sealed using a suitable sealant to prevent moisture absorption into the tile which will appear in and change the crackled effect. We recommend that tiles are fixed in accordance with the advice contained in the British Standard BS5385 Code of Practice and our guidelines that are available on our website in our technical specifications page. Unfortunately we are unable to offer any re stocking on tiles. Please order quantities accordingly and give consideration to both scrap lost through cutting and keeping a few extra for potential remedial work should it be required.

FURNITURE & WORKTOPS

Our furniture and worktops are supplied with a 2 year guarantee period against manufacturing defects from the date of purchase.

Where necessary we supply templates to assist with any cutting that may be required on installation of furniture or worktops. Correct and accurate use of these templates is essential. Please familiarise yourself with them and how they apply before commencement of fitting. Inaccurate cutting or use of these templates may result in items not fitting correctly.

All bathroom furniture will deteriorate through an extended time frame of exposure to high levels of condensation and all bathrooms must have the appropriate ventilation systems fitted to avoid this. The furniture is manufactured from a material that is not suitable for prolonged contact with water and is not recommended for a wet room environment, to minimize this risk we would suggest that the base of the cabinet and the back wall are sealed with suitable sealant.

Our painted furniture range is manufactured from Grade A MDF and is finished using a high quality 2PAC paint system.

Silverdale Bathrooms
Silverdale Road,
Newcastle under Lyme,
Staffordshire
ST5 6EH.

t: +44 (0)1782 717 175
f: +44 (0)1782 717 166

To view a full copy of our business terms and conditions please contact our office on 01782 717 175 or email sales@silverdalebathrooms.co.uk

Cleaning of furniture and worktops should be with warm water or pH neutral cleaner with a soft clean cloth. Water and cleaning solutions should be wiped dry from the product. Never use an abrasive cloth, chlorine, caustic, acid or alkaline based cleaners.

To avoid damage in transit our worktops are not prefixed to the cabinets, once in situ we suggest that you fix the two items together using suitable glue such as 'TEC 7.'

BRASSWARE Bar Pressures

Our Victorian and Berkeley ranges of brassware work from 0.2 to 4/5 bars therefore will operate on either low or high pressure systems. Before purchasing and installation please obtain professional advice as to the suitability of both your hot and cold water supply systems.

Brassware is guaranteed for 5 years against manufacturing defects from the date of purchase. Nickel and gold plated surfaces along with all moving parts such as O rings, valves and seals which are subject to normal wear and tear carry a 12 month guarantee period.

All surfaces that are Chrome, gold or nickel plated should be subject to regular cleaning using a soft cloth and mild soapy water. You will need to ensure that the brassware is wiped clean with water and then dried with a soft cloth.

Do not use abrasive cleaners, pads or harsh cleaning agents containing alcohol, bleach, acids, vinegar, ammonia or antibacterial ingredients. As gold is a soft metal please note that it can be easily damaged by cleaning products and be depleted by excessive rubbing, even with a soft cloth.

GOLD/NICKEL

Though we take care to ensure that our gold and nickel finishes match across the range, due to the wide variety of base materials and finishing techniques required we cannot guarantee an exact match.

Any plated product in either gold or nickel is classed as a special order therefore Silverdale are unable to accept returns on any product unless it is deemed faulty under warranty.

DESIGN & SPECIFICATIONS

In the interest of continual design, development and product improvement we reserve the right to amend or adjust specifications at any time.

BROCHURE ACCURACY

Colour reproduction in the brochure may vary slightly to the actual product however we have worked closely with our printer to ensure that any difference is minimal. The finishes are as accurate as the variables in the printing process.

In the interest of continual design, development and product improvement we reserve the right to amend or adjust specifications at any time. Where an identical product is no longer available we will supply the nearest equivalent from our then current range. This guarantee covers products supplied for installation into domestic premises in the UK and Ireland only. The guarantee may be transferred to a subsequent purchaser of the premises in which the product is initially installed, but it will not apply if the product is re-installed elsewhere. This guarantee does not extend to any item rendered defective by faulty installation, inappropriate use and accidental damage after purchase, nor does it cover normal wear and tear.

Silverdale Bathrooms Limited is a company incorporated in England (company number 9266479) with the registered office at 293 Silverdale Road, Newcastle under Lyme. ST5 6EH.

SDFEB20

Designed and produced by: cherrytreecreative.co.uk / Photography by: Adrian Heapey & Paul Thompson. Thanks to Utopia Furniture for the use of their London Grey Roseberry Furniture in our Hillingdon Collection and Regent Tall Basin Monobloc tap shown with our bowl collection.



LUXURY CERAMICS
HAND MADE IN THE UK

A TRADITION OF EXCELLENCE

WWW.SILVERDALEBATHROOMS.CO.UK